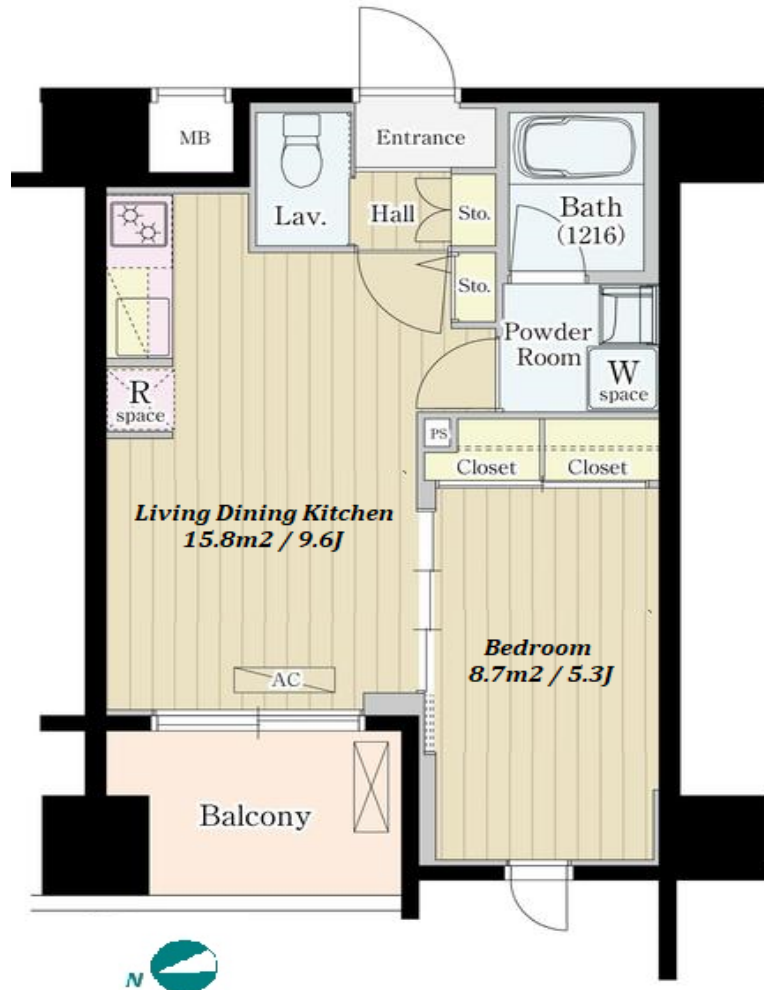
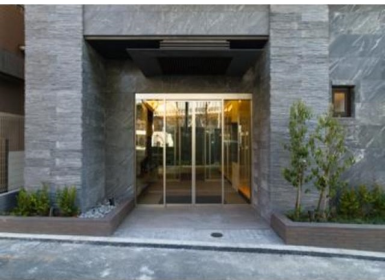


Property Name	MATSUBA	Unit No.	TYPE	Access	Gotanda Station on JR Yamanote Line (5 min) Meguro Station on JR Yamanote Line (10 min)
		702	Apt.		
Address	2-1-20, Nishigotanda, Shinagawa-Ku, Tokyo				

New Apt. in Gotanda, near "Meguro" & "Meguro River"



\*The actual Layout & Size may differ slightly from this floor plans & pictures.

Lease Conditions			
LAYOUT	1 BR		
SIZE	34.47 m²/371.03 ft²		
RENT	JPY 170,000 / month		
Management Fee	JPY10,000/month		
Deposit	2 months	Key Money	1 month
Lease Term	Standard lease for 24 months		
Available	Early, Apr, 2024		
Renewal Fee	1 month		
Agent Fee	1 month + tax		
Other Info	Key Replacement Fee : JPY20,000 Tax not included / Guarantor Company : TBC / Auto lock / Air-Con / Separated Toilet / Balcony / Penalty Fee for Early Cancellation / Flooring / Bathroom dryer		

Building Information			
Completion	Mar, 2018	Earthquake Resistance	New
Structure	RC, 12 story		
Car Parking	JPY38,000/ month		
Bicycle Parking	extra charge		
Music Instrument	-	Pet	-
Facilities	Motorcycle Parking (TBC) / Trunk Room (JPY5,000/ month) / Within 20 min to Roppongi by train / Within 20 min to Tokyo station by car / Near Large Parks / Delivery box / Elevator		

Remarks
Renters Insurance : Required



HOUSEREP TOKYO INC.

ハウスレップトーキョー株式会社

#301, 1-4-15, Hiroo, Shibuya-ku, Tokyo 150-0012, Japan

+81 (0)3 6427 5860 inquiry@housserep-tokyo.com

Transaction Type : Intermediate

Agent Fee : 1 month + tax

Website : www.housserep-tokyo.com

