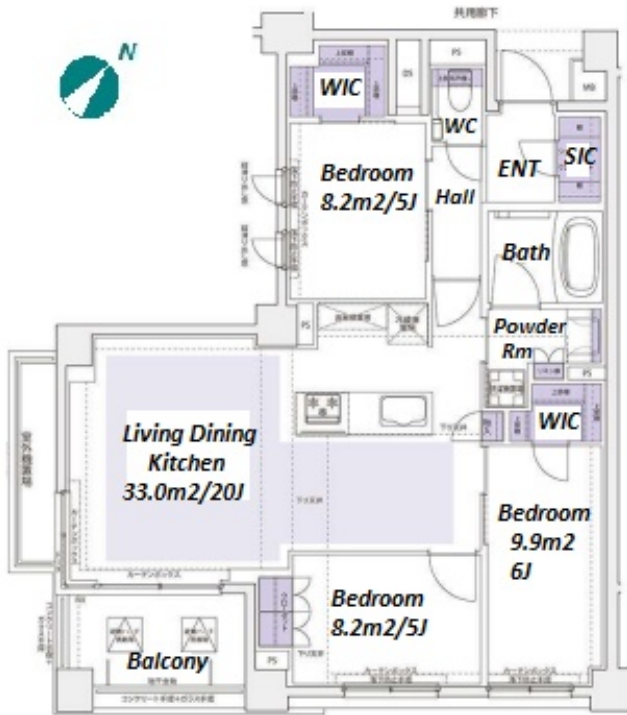
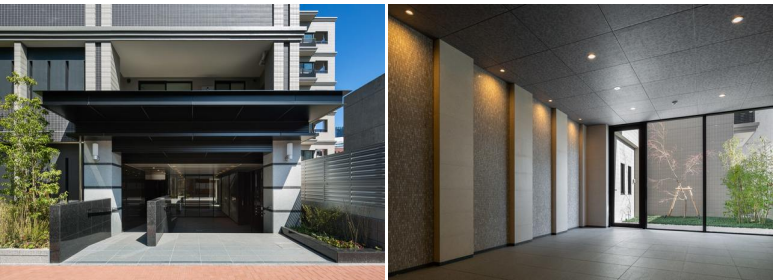


FOR RENT		Property ID No. :152317			HOUSEREP TOKYO INC.		Website : www.housserep-tokyo.com	
Property Name	KDX RESIDENCE YOKOHAMA MOMIJIZAKA		Unit No.	TYPE	Access	Sakuragichou Station on Blue Line (7 min) Sakuragichou Station on JR Negishi Line (7 min)		
			408	Apt.				
Address	6-1, Momijigaoka, Nishi-Ku, Yokohama-Shi, Kanagawa							


Stylish Low Rise Apt. near Sakuragicho stn. and "Landmark Tower"



Lease Conditions			
LAYOUT	3 BR		
SIZE	80.75 m²/869.18 ft²		
RENT	JPY 318,000 / month		
Management Fee	JPY20,000/month		
Deposit	2 months	Key Money	1 month
Lease Term	Standard lease for 24 months		
Available	Mid, Apr, 2024		
Renewal Fee	1 month		
Agent Fee	1 month + tax		
Other Info	Key Replacement Fee : JPY20,000 Tax not included / Guarantor Company : TBC / Auto lock / Air-Con / Separated Toilet / Balcony / CS/CATV / Flooring / Floor Heating / Bathroom dryer / WIC		

Building Information			
Completion	Mar, 2021	Earthquake Resistance	New
Structure	RC, 6 story		
Car Parking	N/A		
Bicycle Parking	JPY500 + tax / month		
Music Instrument	-	Pet	
Facilities	Motorcycle Parking (TBC) / Near Large Parks / Janitor / Delivery box / Elevator / Newly-built (~7 y/o)		

Remarks
Renters Insurance : Required / Pet:additional deposit ( 1 month ) / Pet : a small dog or a cat



HOUSEREP TOKYO INC.


ハウスレップトーキョー株式会社

#301, 1-4-15, Hiroo, Shibuya-ku, Tokyo 150-0012, Japan  
 +81 (0)3 6427 5860 inquiry@housserep-tokyo.com

Transaction Type : Intermediate

Agent Fee : 1 month + tax

Website : www.housserep-tokyo.com



\*The actual Layout & Size may differ slightly from this floor plans & pictures.