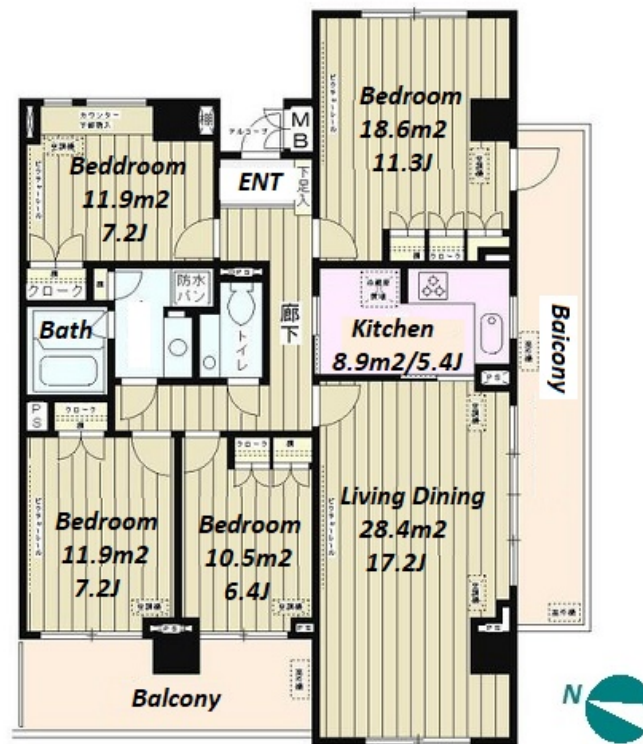
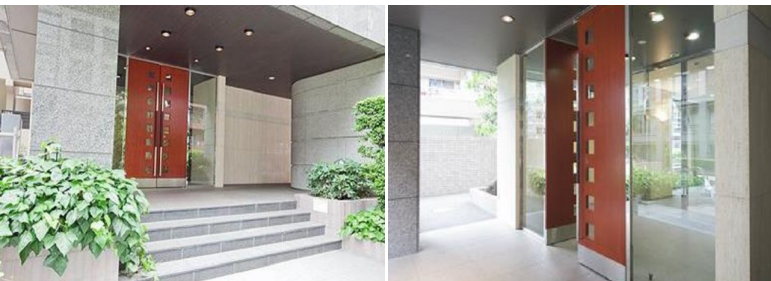


Property Name	MARSH FIELD YONBANCHO	Unit No.	TYPE	Access	Ichigaya Station on JR Chuo Line Rapid Service (3 min) Hannzoumonn Station on Hanzomon Line (12 min)
		805	Apt.		
Address	6-11, Yombancho, Chiyoda-Ku, Tokyo				



Lease Conditions

LAYOUT	4 BR		
SIZE	117.58 m²/1265.62 ft²		
RENT	JPY 500,000 / month		
Management Fee	JPY20,000/month		
Deposit	2 months	Key Money	2 months
Lease Term	Standard lease for 24 months		
Available	Now		
Renewal Fee	1 month		
Agent Fee	1 month + tax		
Other Info	Key Replacement Fee : JPY20,000 Tax not included / Auto lock / Air-Con / Penalty Fee for Early Cancellation / Flooring / Bathroom dryer		

Building Information

Completion	May, 1998	Earthquake Resistance	New
Structure	SRC, 12 story		
Car Parking	JPY42,000 + tax / month		
Bicycle Parking	for 1 space (Included)		
Music Instrument	-	Pet	-
Facilities	Janitor / Delivery box / Close to Station		

Remarks

Renters Insurance : Required

*The actual Layout & Size may differ slightly from this floor plans & pictures.



HOUSEREP TOKYO INC.

ハウスレップトーキョー株式会社

#301, 1-4-15, Hiroo, Shibuya-ku, Tokyo 150-0012, Japan

+81 (0)3 6427 5860

inquiry@housserep-tokyo.com

Transaction Type : Intermediate

Agent Fee : 1 month + tax

Website : www.housserep-tokyo.com

