

FOR RENT

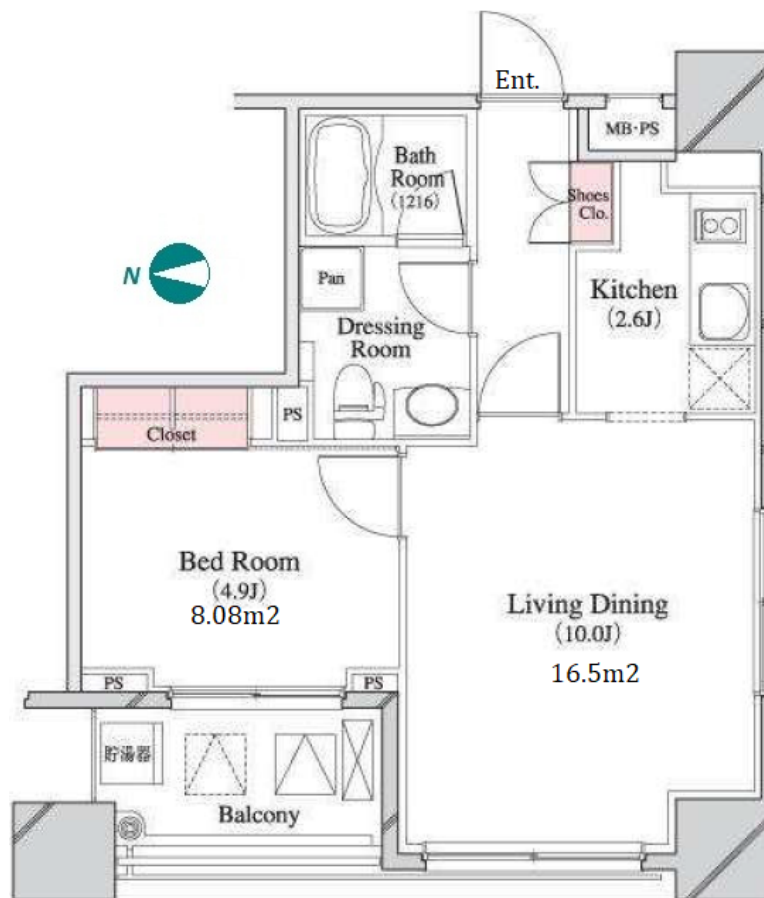
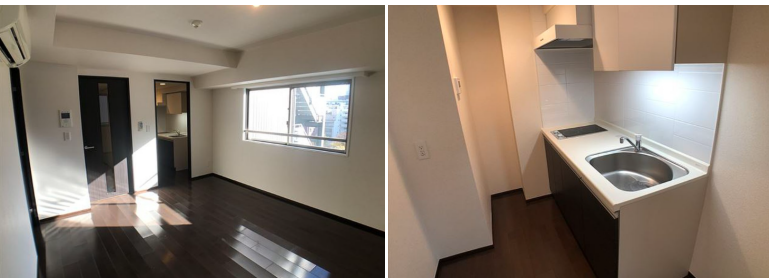
Property ID No. :152058

HOUSEREP TOKYO INC.

Website : www.housserep-tokyo.com

Property Name	PARK CUBE HATCHOBORI	Unit No.	TYPE	Access	Hacchoubori Station on JR Keiyo Line (1 min) Hacchoubori Station on Hibiya Line (1 min)
		501	Apt.		
Address	4-8-7, Hatchobori, Chuo-Ku, Tokyo				

Mid-rise Apt. in Hachobori, near Tokyo Bay Area



*The actual Layout & Size may differ slightly from this floor plans & pictures.

Lease Conditions			
LAYOUT	1 BR		
SIZE	41.29 m²/444.44 ft²		
RENT	JPY 182,000 / month		
Management Fee	JPY10,000/month		
Deposit	2 months	Key Money	1 month
Lease Term	Standard lease for 24 months		
Available	Early, Mar, 2024		
Renewal Fee	1 month		
Agent Fee	1 month + tax		
Other Info	Key Replacement Fee : JPY15,000 Tax not included / Guarantor Company : TBC / Auto lock / Air-Con / Separated Toilet / Balcony / Penalty Fee for Early Cancellation / Musical Instrument Negotiable / CS/CATV / Flooring / IH Stoves / Bathroom dryer		
Building Information			
Completion	Mar, 2009	Earthquake Resistance	New
Structure	RC, 16 story		
Car Parking	JPY40,000 + tax / month		
Bicycle Parking	TBC		
Music Instrument	Negotiable	Pet	Allowed
Facilities	Motorcycle Parking (TBC) / Within 20 min to Roppongi by train / Within 20 min to Tokyo station by car / Near Large Parks / Janitor / Delivery box / Elevator / Close to Station / High-rise		

Remarks
Renters Insurance : Required / Pet:additional deposit (1 month) / Pet : a small dog or a cat



HOUSE REP TOKYO INC.

ハウスレップトーキョー株式会社

#301, 1-4-15, Hiroo, Shibuya-ku, Tokyo 150-0012, Japan

+81 (0)3 6427 5860

inquiry@housserep-tokyo.com

Transaction Type : Intermediate

Agent Fee : 1 month + tax

Website : www.housserep-tokyo.com

