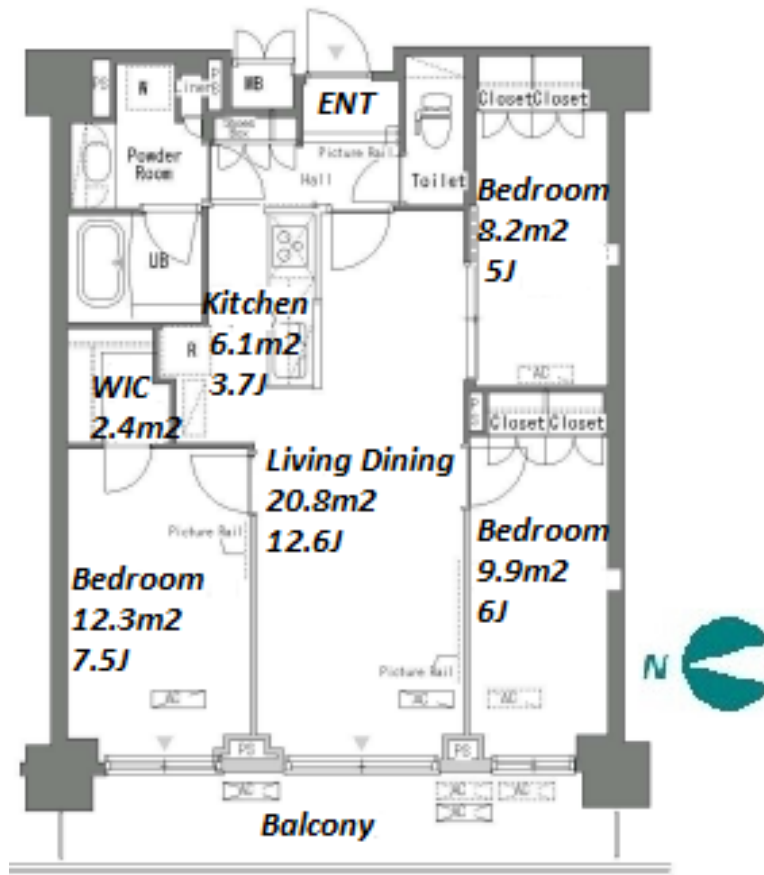


| | | | | | |
|---------------|---------------------------------|----------|------|--------|--|
| Property Name | PARK AXIS TATSUMI STAGE | Unit No. | TYPE | Access | Tatsumi Station on Yurakucho Line (5 min) Shin-kiba Station on Rinkai Line (15 min) |
| | | 903 | Apt. | | |
| Address | 2-1-56, Tatsumi, Koto-Ku, Tokyo | | | | |

Mid-rise apt. in Tastumi near Shinkiba area



*The actual Layout & Size may differ slightly from this floor plans & pictures.

| Lease Conditions | | | |
|------------------|--|-----------|---------|
| LAYOUT | 3 BR | | |
| SIZE | 77.02 m²/829.03 ft² | | |
| RENT | JPY 232,000 / month | | |
| Management Fee | JPY15,000/month | | |
| Deposit | 2 months | Key Money | 1 month |
| Lease Term | Standard lease for 24 months | | |
| Available | Mid, Mar, 2024 | | |
| Renewal Fee | 1 month | | |
| Agent Fee | 1 month + tax | | |
| Other Info | Key Replacement Fee : JPY15,000 Tax not included / Guarantor Company : TBC / Auto lock / Air-Con / Separated Toilet / Balcony / Penalty Fee for Early Cancellation / Musical Instrument Negotiable / Flooring / Bathroom dryer / WIC | | |

| Building Information | | | |
|----------------------|--|-----------------------|---------|
| Completion | Jan, 2008 | Earthquake Resistance | New |
| Structure | RC, 13 story | | |
| Car Parking | extra charge | | |
| Bicycle Parking | TBC | | |
| Music Instrument | Negotiable | Pet | Allowed |
| Facilities | Motorcycle Parking (TBC) / Near Large Parks / Janitor / Delivery box / Elevator / Security | | |

| Remarks |
|---|
| Renters Insurance : Required / Bicycle parking : Registration fee: JPY.2,000+tax / Pet:additional deposit (1 month) / Pet : a small dog or up to two cats |



HOUSEREP TOKYO INC.

ハウスレップトーキョー株式会社

#301, 1-4-15, Hiroo, Shibuya-ku, Tokyo 150-0012, Japan

+81 (0)3 6427 5860

inquiry@housserep-tokyo.com

Transaction Type : Intermediate

Agent Fee : 1 month + tax

Website : www.housserep-tokyo.com

