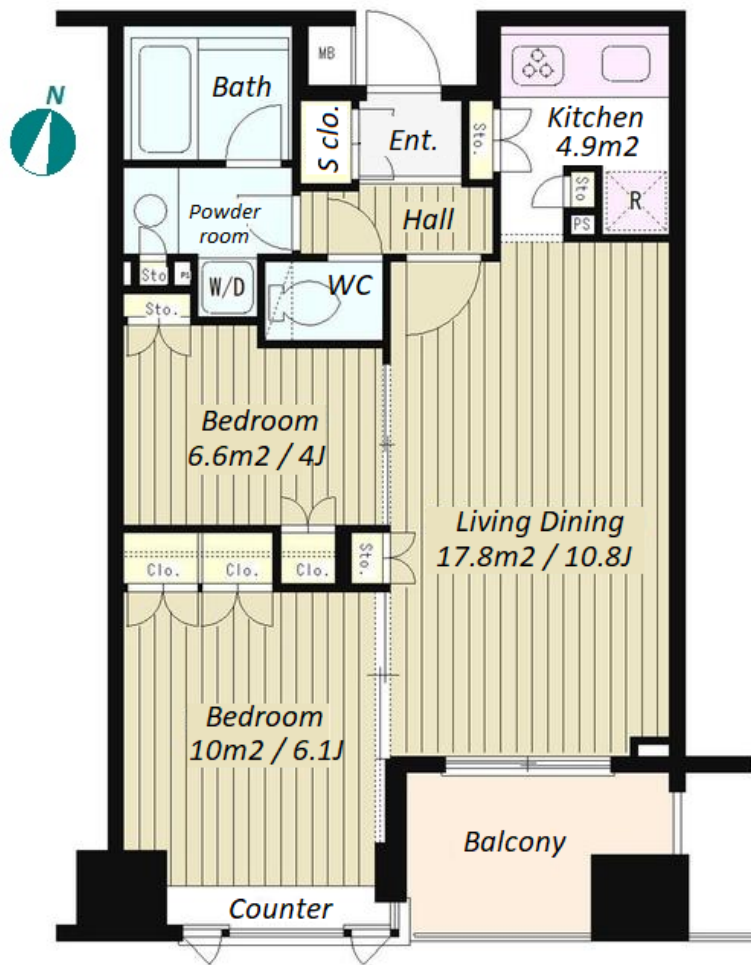


Property Name	KOKUYOORE NIHONBASHI	Unit No.	TYPE	Access	Kodenmachou Station on Hibiya Line (3 min) Ninngyouchou Station on Hibiya Line (5 min)
		802	Apt.		
Address	2-5-12, Nihombashihoridomecho, Chuo-Ku, Tokyo				

Modern Apt. with good access to 6 stn. 4 lines in Nihonbashi



*The actual Layout & Size may differ slightly from this floor plans & pictures.

Lease Conditions			
LAYOUT	2 BR		
SIZE	53.68 m²/577.8 ft²		
RENT	JPY 224,000 / month		
Management Fee	JPY15,000/month		
Deposit	2 months	Key Money	1 month
Lease Term	Standard lease for 24 months		
Available	Mid, Feb, 2024		
Renewal Fee	1 month		
Agent Fee	1 month + tax		
Other Info	Key Replacement Fee : JPY20,000 Tax not included / Guarantor Company : TBC / Auto lock / Air-Con / Separated Toilet / Balcony / Internet Included / Internet (Extra Charge) / Penalty Fee for Early Cancellation / Musical Instrument Negotiable / CS/CATV / Flooring / Bathroom dryer		

Building Information			
Completion	Feb, 2005	Earthquake Resistance	New
Structure	SRC, 12 story		
Car Parking	JPY38,000 ~ 40,000 + tax / month		
Bicycle Parking	for 1 space (Included)		
Music Instrument	Negotiable	Pet	-
Facilities	Motorcycle Parking (TBC) / Janitor / Delivery box / Elevator / Close to Station		

Remarks
Renters Insurance : Required



HOUSEREP TOKYO INC.

ハウスレップトーキョー株式会社

#301, 1-4-15, Hiroo, Shibuya-ku, Tokyo 150-0012, Japan

+81 (0)3 6427 5860

inquiry@houserep-tokyo.com

Transaction Type : Intermediate

Agent Fee : 1 month + tax

Website : www.houserep-tokyo.com

