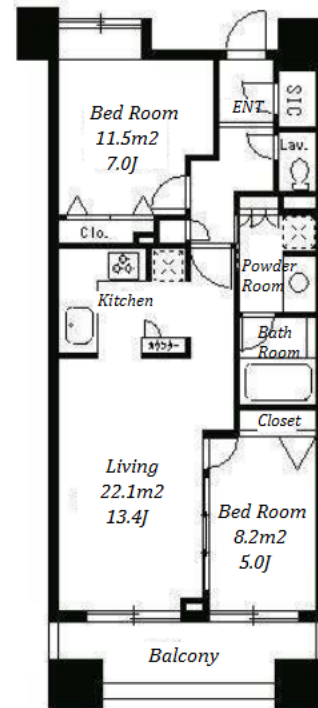


Property Name	PARK CUBE NIHONBASHI SUITENGU	Unit No.	TYPE	Access	Suitennguumae Station on Hanzomon Line (1 min) Ninngyouchou Station on Hibiya Line (8 min)
		1206	Apt.		
Address	33-4, Nihombashihakozakicho, Chuo-Ku, Tokyo				

Cozy Apt. in Hakozakicho, Suitengu Area, Peaceful Neighborhood



Lease Conditions			
LAYOUT	2 BR		
SIZE	58.9 m²/633.99 ft²		
RENT	JPY 250,000 / month		
Management Fee	JPY15,000/month		
Deposit	2 months	Key Money	1 month
Lease Term	Standard lease for 24 months		
Available	Mid, Mar, 2024		
Renewal Fee	1 month		
Agent Fee	1 month + tax		
Other Info	Key Replacement Fee : JPY15,000 Tax not included / Guarantor Company : TBC / Auto lock / Air-Con / Separated Toilet / Balcony / Internet (Extra Charge) / Penalty Fee for Early Cancellation / CS/CATV / Flooring / Floor Heating / Bathroom dryer		

Building Information			
Completion	May, 2005	Earthquake Resistance	New
Structure	RC, 12 story		
Car Parking	JPY33,000 ~ 35,000 + tax / month		
Bicycle Parking	for 1 space (Included)		
Music Instrument	-	Pet	Allowed
Facilities	Motorcycle Parking (TBC) / Within 20 min to Tokyo station by car / Near Large Parks / Delivery box / Elevator		

*The actual Layout & Size may differ slightly from this floor plans & pictures.



HOUSEREP TOKYO INC.

ハウスレップトーキョー株式会社

#301, 1-4-15, Hiroo, Shibuya-ku, Tokyo 150-0012, Japan

+81 (0)3 6427 5860 inquiry@housserep-tokyo.com

Transaction Type : Intermediate

Agent Fee : 1 month + tax

Website : www.housserep-tokyo.com



Remarks
Renters Insurance : Required / Bicycle parking : Registration fee: JPY.2,000+tax / Pet:additional deposit (1 month) / Pet : a small dog or a cat