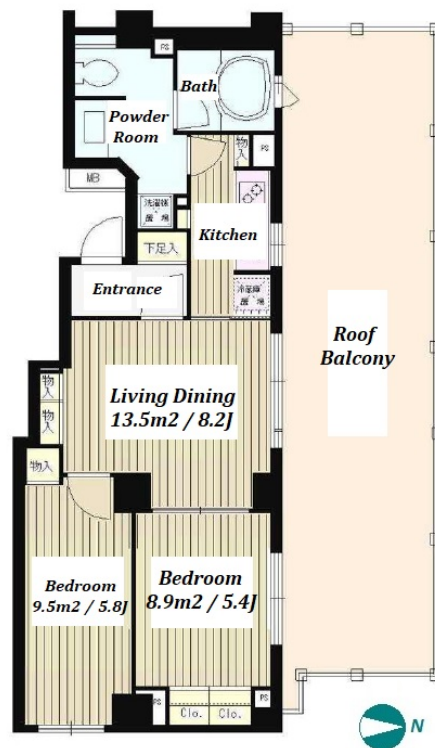


Property Name	PARK HOMES ROPPONGI NOGIZAKA URBAN RESIDENCE	Unit No.	TYPE	Access	Nogizaka Station on Chiyoda Line (2 min) Ropponngi Station on Hibiya Line (11 min) Aoyamaicchoume Station on Oedo Line (12 min)
		508	Apt.		
Address	7-1-14, Roppongi, Minato-Ku, Tokyo				

Cozy Apt. in Roppongi Area near Tokyo Midtown



*The actual Layout & Size may differ slightly from this floor plans & pictures.

Lease Conditions			
LAYOUT	2 BR		
SIZE	53.74 m²/578.45 ft²		
RENT	JPY 257,000 / month		
Management Fee	JPY15,000/month		
Deposit	2 months	Key Money	1 month
Lease Term	Standard lease for 24 months		
Available	Now		
Renewal Fee	1 month		
Agent Fee	1 month + tax		
Other Info	Key Replacement Fee : JPY20,000 Tax not included / Guarantor Company : TBC / Auto lock / Air-Con / Separated Toilet / Balcony / Penalty Fee for Early Cancellation / Musical Instrument Negotiable / Roof Balcony / CS/CATV / Flooring / Floor Heating / Bathroom dryer / Corner Unit		

Building Information			
Completion	Mar, 2006	Earthquake Resistance	New
Structure	RC, 5 story		
Car Parking	TBC		
Bicycle Parking	TBC		
Music Instrument	Negotiable	Pet	-
Facilities	Motorcycle Parking (TBC) / Within 20 min walk to Roppongi / Near Large Parks / Delivery box / Elevator		

Remarks
Renters Insurance : Required



HOUSEREP TOKYO INC.

ハウスレップトーキョー株式会社

#301, 1-4-15, Hiroo, Shibuya-ku, Tokyo 150-0012, Japan

+81 (0)3 6427 5860

inquiry@housserep-tokyo.com

Transaction Type : Intermediate

Agent Fee : 1 month + tax

Website : www.housserep-tokyo.com

