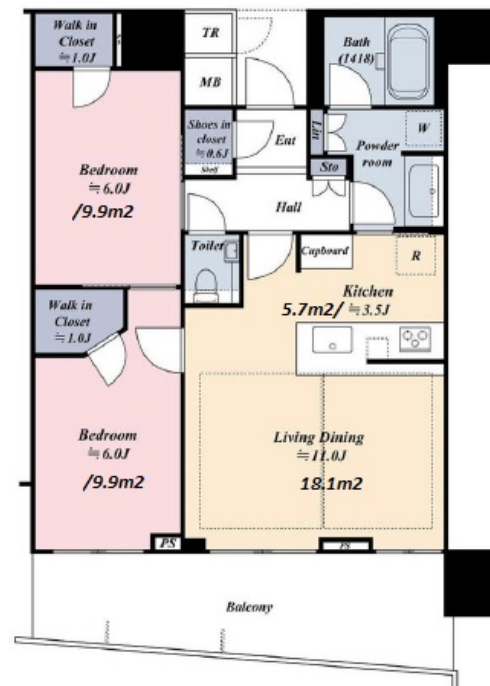


Property Name	PARK TOWER HARUMI	Unit No.	TYPE	Access	Tsukishima Station on Yurakucho Line (12 min) Toyosu Station on Yurakucho Line (15 min) Kachidoki Station on Oedo Line (15 min)
		17F	Apt.		
Address	2-2-42, Harumi, Chuo-Ku, Tokyo				

New Stylish Apt. in Harumi, Tokyo Bay Area



Lease Conditions			
LAYOUT	2 BR		
SIZE	63.1 m ² /679.2 ft ²		
RENT	JPY 330,000 / month		
Management Fee	JPY20,000/month		
Deposit	2 months	Key Money	1 month
Lease Term	Fixed term lease for 36 months		
Available	Negotiable		
Renewal Fee	-		
Agent Fee	1 month + tax		
Other Info	Guarantor Company : TBC / Auto lock / Fridge / Air-Con / Separated Toilet / Balcony / Musical Instrument Negotiable / Furnished / Flooring / Floor Heating / Dishwasher / Bathroom dryer / WIC / Semi-furnished (Home Appliances)		

Building Information			
Completion	Feb, 2019	Earthquake Resistance	New
Structure	RC, 48 story		
Car Parking	JPY32,000 + tax / month		
Bicycle Parking	JPY200 + tax / month		
Music Instrument	Negotiable	Pet	N/A
Facilities	Motorcycle Parking (JPY3,000 + tax / month) / Trunk Room (TBC) / Within 20 min to Tokyo station by car / Near Large Parks / Janitor / Delivery box / Elevator / Sky lounge / 24h Garbage Drop-off / High-rise / Newly-built (~7 y/o)		

Remarks
Fixed term lease : Re-contract fee: 1 month of new rent / Renters Insurance : Required

*The actual Layout & Size may differ slightly from this floor plans & pictures.



HOUSEREP TOKYO INC.

ハウスレップトーキョー株式会社

#301, 1-4-15, Hiroo, Shibuya-ku, Tokyo 150-0012, Japan

+81 (0)3 6427 5860

inquiry@housserep-tokyo.com

Transaction Type : Intermediate

Agent Fee : 1 month + tax

Website : www.housserep-tokyo.com

