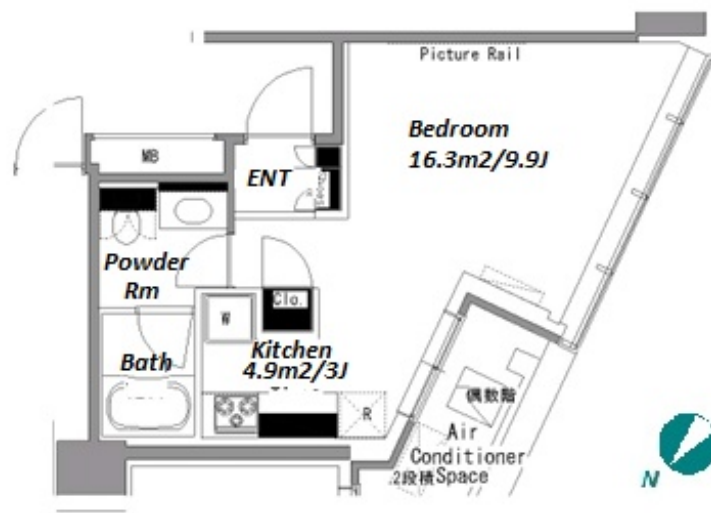
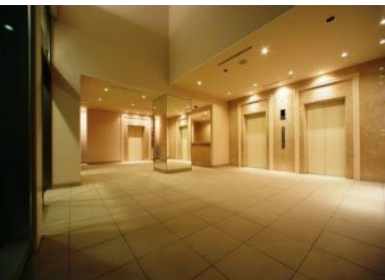


Property Name	MY TOWER RESIDENCE	Unit No.	TYPE	Access	Yoyogi Station on JR Yamanote Line (3 min) Minamishinnjuku Station on Odakyu Line (3 min) Shinnjuku Station on JR Yamanote Line (8 min)
		1612	Apt.		
Address	1-53-1, Yoyogi, Shibuya-Ku, Tokyo				

## Designer's Tower Mansion with Full Glass Windows at the Yoyogi Area



Lease Conditions			
LAYOUT	Studio		
SIZE	30.4 m <sup>2</sup> /327.22 ft <sup>2</sup>		
RENT	JPY 160,000 / month		
Management Fee	JPY10,000/month		
Deposit	2 months	Key Money	-
Lease Term	Standard lease for 24 months		
Available	Now		
Renewal Fee	1 month		
Agent Fee	1 month + tax		
Other Info	Key Replacement Fee : JPY20,000 Tax not included / Guarantor Company : TBC / No Key Money / Auto lock / Air-Con / Separated Toilet / Penalty Fee for Early Cancellation / Musical Instrument Negotiable / Flooring / Bathroom dryer		

Building Information			
Completion	Feb, 2007	Earthquake Resistance	New
Structure	RC, 27 story		
Car Parking	JPY48,000 + tax / month		
Bicycle Parking	for 1 space ( Included )		
Music Instrument	Negotiable	Pet	-
Facilities	Motorcycle Parking (TBC) / Front desk / Janitor / Delivery box / Elevator / Close to Station / High-rise		

Remarks
Renters Insurance : Required

\*The actual Layout & Size may differ slightly from this floor plans & pictures.



**HOUSEREP TOKYO INC.**

ハウスレップトーキョー株式会社

#301, 1-4-15, Hiroo, Shibuya-ku, Tokyo 150-0012, Japan

+81 (0)3 6427 5860 inquiry@houserep-tokyo.com

Transaction Type : Intermediate

Agent Fee : 1 month + tax

Website : www.houserep-tokyo.com

