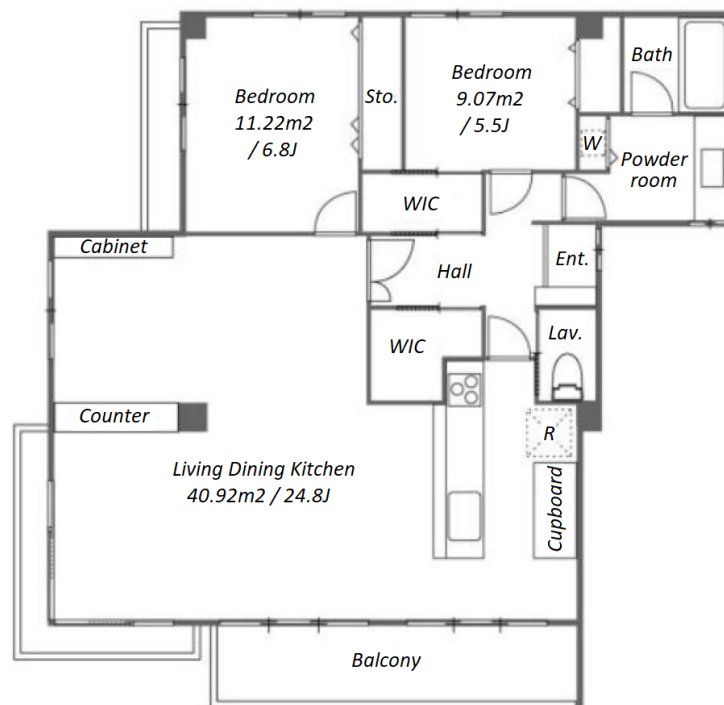


Property Name	MANSION GAJOEN	Unit No.	TYPE	Access	Meguro Station on Namboku Line (8 min) Fudoumae Station on Tokyu Meguro Line (8 min) Gotanda Station on JR Yamanote Line (13 min)
		14F	Apt.		
Address	1-8-39, Shimomeguro, Meguro-Ku, Tokyo				

Mid Rise Vintage Apt. near "Meguro" stn.



Lease Conditions			
LAYOUT	2 BR		
SIZE	125.81 m <sup>2</sup> /1354.2 ft <sup>2</sup>		
RENT	JPY 450,000 / month		
Management Fee	-		
Deposit	2 months	Key Money	1 month
Lease Term	Fixed term lease for 48 months		
Available	Negotiable		
Renewal Fee	-		
Agent Fee	1 month + tax		
Other Info	Guarantor Company : TBC / Renovated / Fridge / Air-Con / Separated Toilet / Balcony / Musical Instrument Negotiable / Nice Views / Flooring / Washer / Dryer / Dishwasher / Oven / Bathroom dryer / WIC / Corner Unit		

Building Information			
Completion	Sep, 1970	Earthquake Resistance	Old
Structure	SRC, 15 story		
Car Parking	JPY23,300 + tax / month		
Bicycle Parking	-		
Music Instrument	Negotiable	Pet	Allowed
Facilities	Within 20 min to Roppongi by train / Near Large Parks / Elevator / Sky lounge / 24h Garbage Drop-off		

Remarks
Renters Insurance : Required / Hot water fee: base 4,500yen+ 550yen/m3 / Water usage fee deposit: 60,000yen / Pet:additional deposit ( 1 month )

\*The actual Layout & Size may differ slightly from this floor plans & pictures.



HOUSEREP TOKYO INC.

ハウスレップトーキョー株式会社

#301, 1-4-15, Hiroo, Shibuya-ku, Tokyo 150-0012, Japan

+81 (0)3 6427 5860 inquiry@housserrep-tokyo.com

Transaction Type : Intermediate

Agent Fee : 1 month + tax

Website : www.housserrep-tokyo.com

