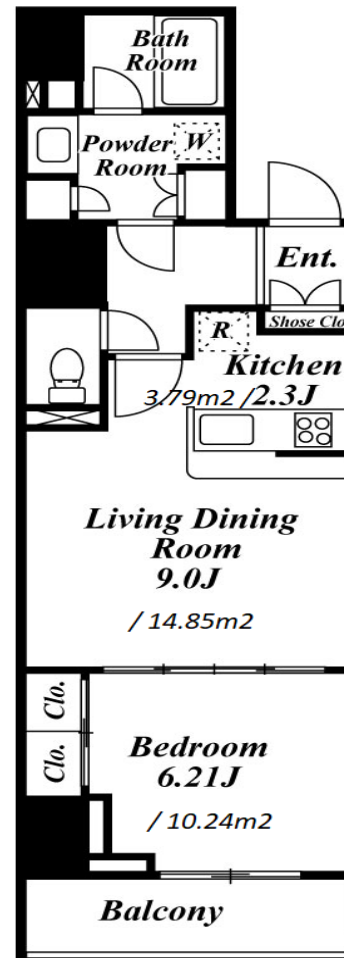
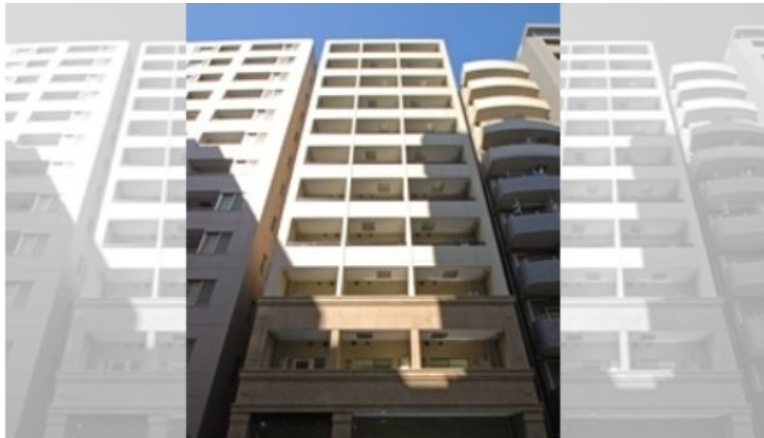


Property Name	PARKWOOD RESIDENCE NIHONBASHI	Unit No.	TYPE	Access	Kodenmachou Station on Hibiya Line (4 min) Bakuroyokoyama Station on Toei Shinjuku Line (4 min) Ninngyouchou Station on Hibiya Line (5 min)
		303	Apt.		
Address	2-5-10, Nihombashihoridomecho, Chuo-Ku, Tokyo				

Modern Mid Rise Apt. near Kodenmacho & Ningyocho stn.



Lease Conditions			
LAYOUT	1 BR		
SIZE	46.75 m ² /503.21 ft ²		
RENT	JPY 182,000 / month		
Management Fee	JPY8,000/month		
Deposit	2 months	Key Money	1 month
Lease Term	Standard lease for 24 months		
Available	Early, Mar, 2024		
Renewal Fee	1 month		
Agent Fee	1 month + tax		
Other Info	Guarantor Company : TBC / Auto lock / Air-Con / Separated Toilet / Balcony / CS/CATV / Flooring / Bathroom dryer / Corner Unit		

Building Information			
Completion	Feb, 2012	Earthquake Resistance	New
Structure	RC, 11 story		
Car Parking	N/A		
Bicycle Parking	extra charge		
Music Instrument	-	Pet	N/A
Facilities	Motorcycle Parking (JPY10,000 + tax / month) / Within 20 min to Tokyo station by car / Janitor / Delivery box / Elevator / Security / Close to Station / 24h Garbage Drop-off		

Remarks
Renters Insurance : Required / Bicycle parking : Registration fee: JPY.8,000+tax

*The actual Layout & Size may differ slightly from this floor plans & pictures.



HOUSEREP TOKYO INC.

ハウズレップトーキョー株式会社

#301, 1-4-15, Hiroo, Shibuya-ku, Tokyo 150-0012, Japan

+81 (0)3 6427 5860 inquiry@housserrep-tokyo.com

Transaction Type : Intermediate

Agent Fee : 1 month + tax

Website : www.housserrep-tokyo.com

