

FOR RENT

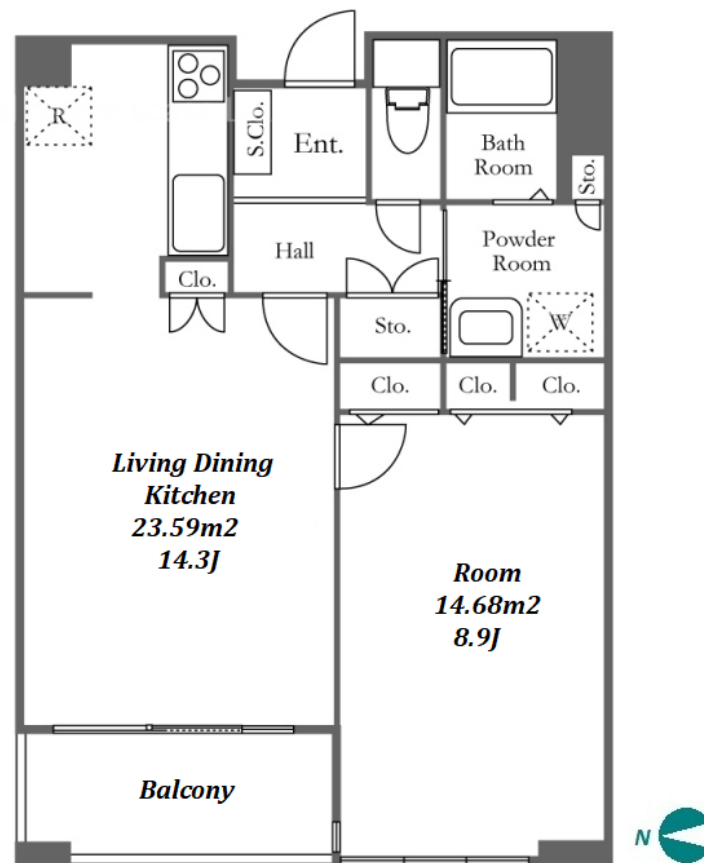
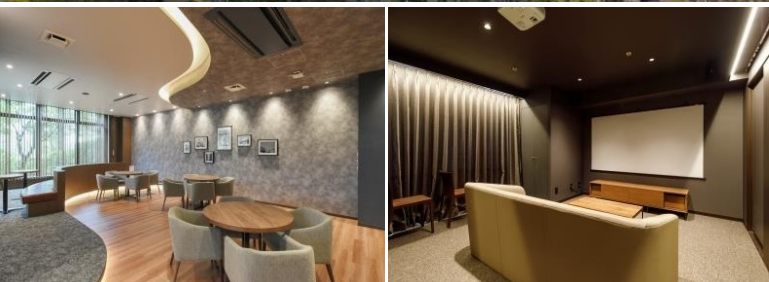
Property ID No. :151443

HOUSEREP TOKYO INC.

Website : www.housserep-tokyo.com

Property Name	RIVER CITY 21 EAST TOWERS II	Unit No.	TYPE	Access	Tsukishima Station on Yurakucho Line (8 min) Hacchoubori Station on JR Keiyo Line (12 min)
		413	Apt.		
Address	2-1-2, Tsukuda, Chuo-Ku, Tokyo				

Tower Residence near Sumida River / Tokyo Bay



*The actual Layout & Size may differ slightly from this floor plans & pictures.

Lease Conditions		
LAYOUT	1 BR	
SIZE	55.57 m ² /598.15 ft ²	
RENT	JPY 226,000 / month	
Management Fee	JPY10,000/month	
Deposit	1 month	Key Money -
Lease Term	Standard lease for 24 months	
Available	Now	
Renewal Fee	1 month	
Agent Fee	1 month + tax	
Other Info	Key Replacement Fee : JPY15,000 Tax not included / Guarantor Company : TBC / No Key Money / Auto lock / Air-Con / Separated Toilet / Balcony / Penalty Fee for Early Cancellation / Flooring / Floor Heating / IH Stoves / Bathroom dryer / 2 Car Parks	

Building Information			
Completion	Aug, 2000	Earthquake Resistance	New
Structure	RC, 43 story		
Car Parking	JPY28,800 + tax / month		
Bicycle Parking	for 1 space (Included)		
Music Instrument	-	Pet	N/A
Facilities	Motorcycle Parking (TBC) / Trunk Room (JPY3,000 + tax / month) / Delivery box / Elevator / Sky lounge / Security		

Remarks
Renters Insurance : Required / Parking : 3 months deposit



HOUSEREP TOKYO INC.

ハウスレップトーキョー株式会社

#301, 1-4-15, Hiroo, Shibuya-ku, Tokyo 150-0012, Japan

+81 (0)3 6427 5860

inquiry@housserep-tokyo.com

Transaction Type : Intermediate

Agent Fee : 1 month + tax

Website : www.housserep-tokyo.com

