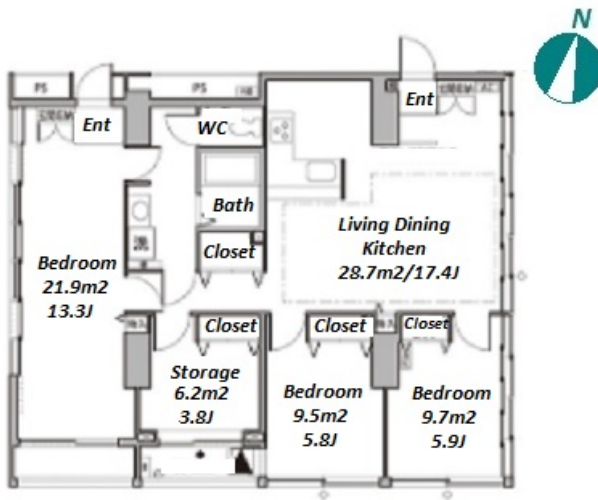



| | | | | | | | | |
|---------------|-----------------------------------|-------------------------|--|----------|---------------------|--------|--|--|
| FOR RENT | | Property ID No. :151400 | | | HOUSEREP TOKYO INC. | | Website : www.houserep-tokyo.com | |
| Property Name | SHINONOME CANAL COURT CODAN 11 | | | Unit No. | TYPE | Access | Tatsumi Station on Yurakucho Line (9 min) Shinonome Station on Rinkai Line (10 min) | |
| | | | | 1312 | Apt. | | | |
| Address | 1-9-11, Shinonome, Koto-Ku, Tokyo | | | | | | | |



| Lease Conditions | | | |
|------------------|---|-----------|---------|
| LAYOUT | 3 BR+S | | |
| SIZE | 110.35 m²/1187.79 ft² | | |
| RENT | JPY 299,000 / month | | |
| Management Fee | JPY15,000/month | | |
| Deposit | 2 months | Key Money | 1 month |
| Lease Term | Standard lease for 24 months | | |
| Available | Mid, Mar, 2024 | | |
| Renewal Fee | 1 month | | |
| Agent Fee | 1 month + tax | | |
| Other Info | Key Replacement Fee : JPY30,000 Tax not included / Guarantor Company : TBC / Auto lock / Air-Con / Separated Toilet / Balcony / CS/CATV / Floor Heating | | |

| Building Information | | | |
|----------------------|---|-----------------------|-----|
| Completion | Jul, 2003 | Earthquake Resistance | New |
| Structure | RC, 14 story | | |
| Car Parking | JPY26,000 + tax / month | | |
| Bicycle Parking | (Included) | | |
| Music Instrument | - | Pet | N/A |
| Facilities | Motorcycle Parking (extra charge) / Designer's / Elevator | | |

| Remarks |
|------------------------------|
| Renters Insurance : Required |



HOUSEREP TOKYO INC.

ハウスレップトーキョー株式会社


#301, 1-4-15, Hiroo, Shibuya-ku, Tokyo 150-0012, Japan

+81 (0)3 6427 5860 inquiry@houserep-tokyo.com

Transaction Type : Intermediate

Agent Fee : 1 month + tax

Website : www.houserep-tokyo.com



*The actual Layout & Size may differ slightly from this floor plans & pictures.