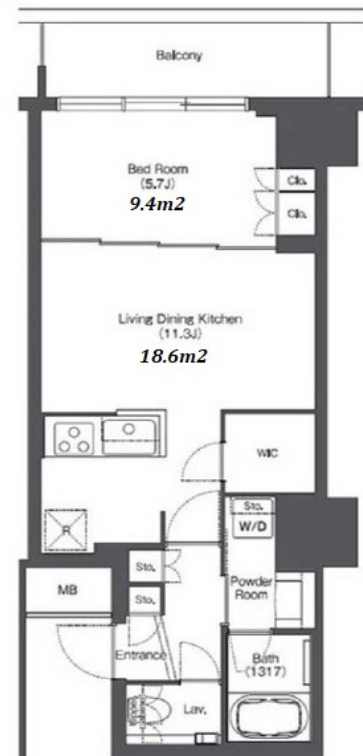
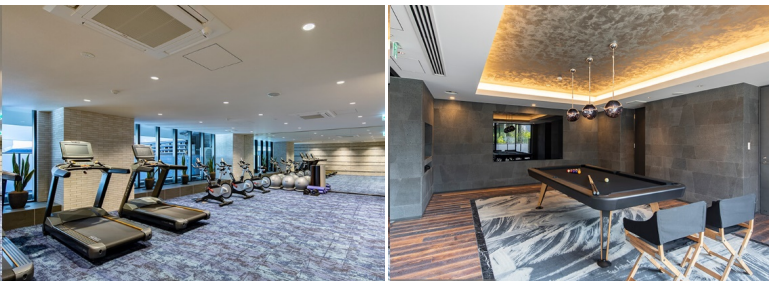


Property Name	TOKYO PORT CITY TAKESHIBA RESIDENCE TOWER	Unit No.	TYPE	Access	Takeshiba Station on (1 min) Hamamatsuchou Station on JR Yamanote Line (7 min) Daimonn Station on Oedo Line (8 min)
		1705	Apt.		
Address	1-13-15, Kaigan, Minato-Ku, Tokyo				

## Water Front Residence w/ Variety of Amenities



Lease Conditions			
LAYOUT	1 BR		
SIZE	43.39 m <sup>2</sup> /467.04 ft <sup>2</sup>		
RENT	JPY 265,000 / month		
Management Fee	-		
Deposit	2 months	Key Money	1 month
Lease Term	Standard lease for 24 months		
Available	Now		
Renewal Fee	1 month		
Agent Fee	1 month + tax		
Other Info	Key Replacement Fee : JPY20,000 Tax not included / Guarantor Company : TBC / Auto lock / Air-Con / Separated Toilet / Balcony / Internet (Extra Charge) / Floor Heating / Dishwasher / Bathroom dryer / WIC		

Building Information			
Completion	Jun, 2020	Earthquake Resistance	New
Structure	RC, 18 story		
Car Parking	extra charge		
Bicycle Parking	extra charge		
Music Instrument	-	Pet	Negotiable * a small dog or a cat
Facilities	Trunk Room (extra charge) / Gym (( Included )) / Within 20 min to Roppongi by train / Near Large Parks / Delivery box / Elevator		

\*The actual Layout & Size may differ slightly from this floor plans & pictures.



# HOUSEREP TOKYO INC.

ハウスレップトーキョー株式会社

#301, 1-4-15, Hiroo, Shibuya-ku, Tokyo 150-0012, Japan

+81 (0)3 6427 5860

inquiry@housserep-tokyo.com

Transaction Type : Intermediate

Agent Fee : 1 month + tax

Website : www.housserep-tokyo.com



Remarks
Renters Insurance : Required / Gym : Fitness Room (for the residents lives upper than 5th floor) / Pet : a small dog or a cat