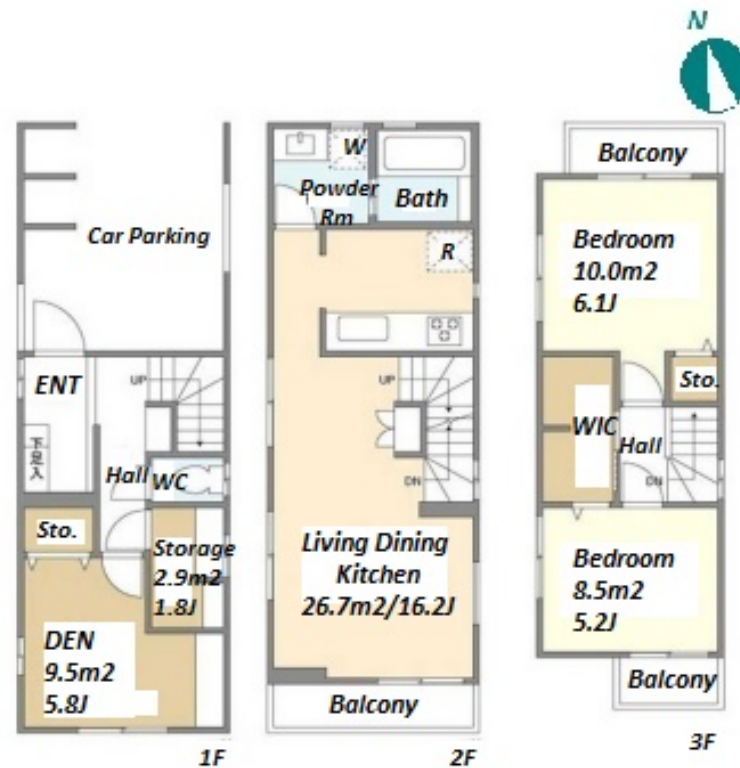


Property Name	KOLET KANAMECHO #06 #07	Unit No.	TYPE	Access	Kanamechou Station on Yurakucho Line (5 min) Ikebukuro Station on (19 min)
		#06	House		
Address	1-27-22, Kanamecho, Toshima-Ku, Tokyo				



Lease Conditions	
LAYOUT	2 BR+S+Den
SIZE	86.87 m <sup>2</sup> /935.06 ft <sup>2</sup>
RENT	JPY 325,000 / month
Management Fee	-
Deposit	2 months
Key Money	-
Lease Term	Standard lease for 24 months
Available	Now
Renewal Fee	1 month
Agent Fee	1 month + tax
Other Info	Guarantor Company : TBC / No Key Money / Air-Con / Separated Toilet / Balcony / Internet (Extra Charge) / Penalty Fee for Early Cancellation / Musical Instrument Negotiable / Flooring / Floor Heating / Dishwasher / Bathroom dryer / WIC

Building Information			
Completion	Nov, 2022	Earthquake Resistance	New
Structure	Wooden, 3 story		
Car Parking	( Included )		
Bicycle Parking	-		
Music Instrument	Negotiable	Pet	Negotiable
Facilities	House / Delivery box / Close to Station / Newly-built (~7 y/o)		

Remarks
Renters Insurance : Required / Parking : Electric Vehicle charger: extra charge

\*The actual Layout & Size may differ slightly from this floor plans & pictures.



# HOUSEREP TOKYO INC.

ハウスレップトーキョー株式会社

#301, 1-4-15, Hiroo, Shibuya-ku, Tokyo 150-0012, Japan

+81 (0)3 6427 5860 inquiry@housserep-tokyo.com

Transaction Type : Intermediate

Agent Fee : 1 month + tax

Website : www.housserep-tokyo.com

