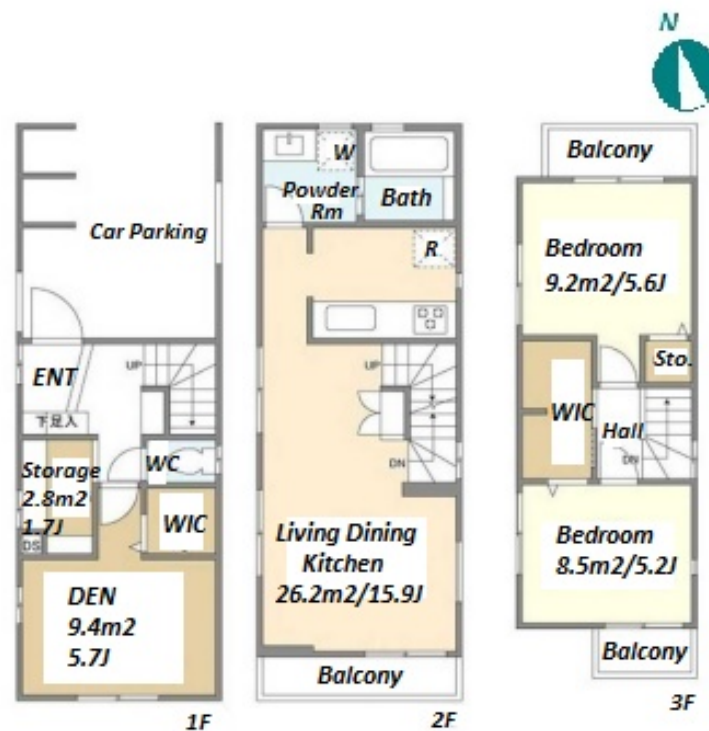
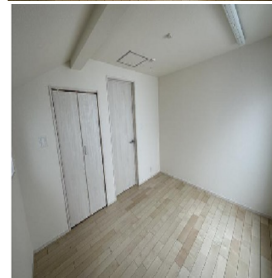
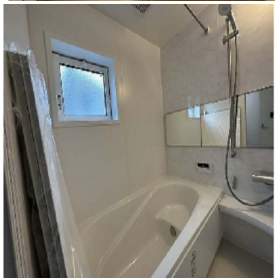
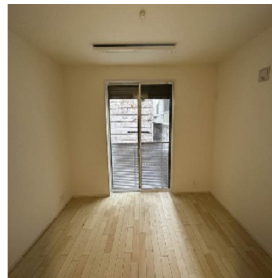


Property Name	KOLET KANAMECHO #05	Unit No.	TYPE	Access	Kanamechou Station on Yurakucho Line (5 min) Ikebukuro Station on (19 min)
			House		
Address	1-27-21, Kanamecho, Toshima-Ku, Tokyo				



Lease Conditions

LAYOUT	2 BR+S+Den
SIZE	85.44 m ² /919.66 ft ²
RENT	JPY 325,000 / month

Management Fee	-		
Deposit	2 months	Key Money	-
Lease Term	Standard lease for 24 months		
Available	Now		
Renewal Fee	1 month		
Agent Fee	1 month + tax		
Other Info	Guarantor Company : TBC / No Key Money / Air-Con / Separated Toilet / Balcony / Internet (Extra Charge) / Penalty Fee for Early Cancellation / Musical Instrument Negotiable / Flooring / Floor Heating / Dishwasher / Bathroom dryer / WIC		

Building Information

Completion	Nov, 2022	Earthquake Resistance	New
Structure	Wooden, 3 story		
Car Parking	(Included)		
Bicycle Parking	-		
Music Instrument	Negotiable	Pet	Negotiable
Facilities	House / Delivery box / Close to Station / Newly-built (~7 y/o)		

Remarks

Renters Insurance : Required / Parking : Electric Vehicle charger: extra charge

*The actual Layout & Size may differ slightly from this floor plans & pictures.



HOUSEREP TOKYO INC.

ハウスレップトーキョー株式会社

#301, 1-4-15, Hiroo, Shibuya-ku, Tokyo 150-0012, Japan

+81 (0)3 6427 5860 inquiry@housserep-tokyo.com

Transaction Type : Intermediate

Agent Fee : 1 month + tax

Website : www.housserep-tokyo.com

