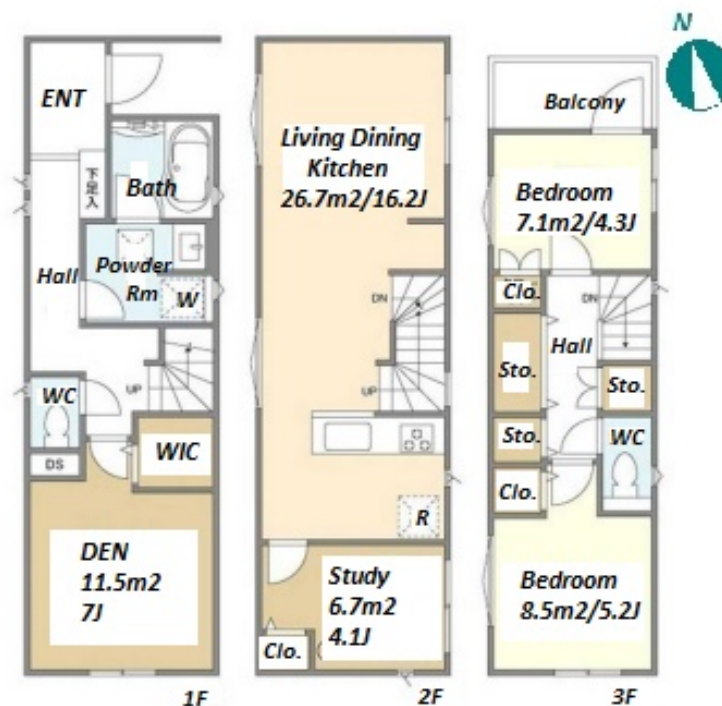


Property Name	KOLET KATSUSHIKA-TAKASAGO #08	Unit No.	TYPE	Access	Shibamata Station on (8 min) Keiseitakasago Station on Keisei Main Line (11 min)
			House		
Address	4-15-18, Shibamata, Katsushika-Ku, Tokyo				



Lease Conditions		
LAYOUT	2 BR+S+Den	
SIZE	96.23 m ² /1035.81 ft ²	
RENT	JPY 215,000 / month	
Management Fee	-	
Deposit	2 months	Key Money -
Lease Term	Standard lease for 24 months	
Available	Now	
Renewal Fee	1 month	
Agent Fee	1 month + tax	
Other Info	Guarantor Company : TBC / No Key Money / Free rent / Air-Con / Separated Toilet / Balcony / Internet (Extra Charge) / Penalty Fee for Early Cancellation / Musical Instrument Negotiable / Flooring / Floor Heating / Dishwasher / Bathroom dryer / 2 Toilets	

Building Information			
Completion	Oct, 2022	Earthquake Resistance	New
Structure	Wooden, 3 story		
Car Parking	(Included)		
Bicycle Parking	-		
Music Instrument	Negotiable	Pet	Negotiable
Facilities	House / Delivery box / Newly-built (~7 y/o)		

*The actual Layout & Size may differ slightly from this floor plans & pictures.



HOUSE REP TOKYO INC.

ハウズレップトーキョー株式会社

#301, 1-4-15, Hiroo, Shibuya-ku, Tokyo 150-0012, Japan

+81 (0)3 6427 5860 inquiry@housserrep-tokyo.com

Transaction Type : Intermediate

Agent Fee : 1 month + tax

Website : www.housserrep-tokyo.com



Remarks
Renters Insurance : Required / Parking : Electric Vehicle charger: extra charge