

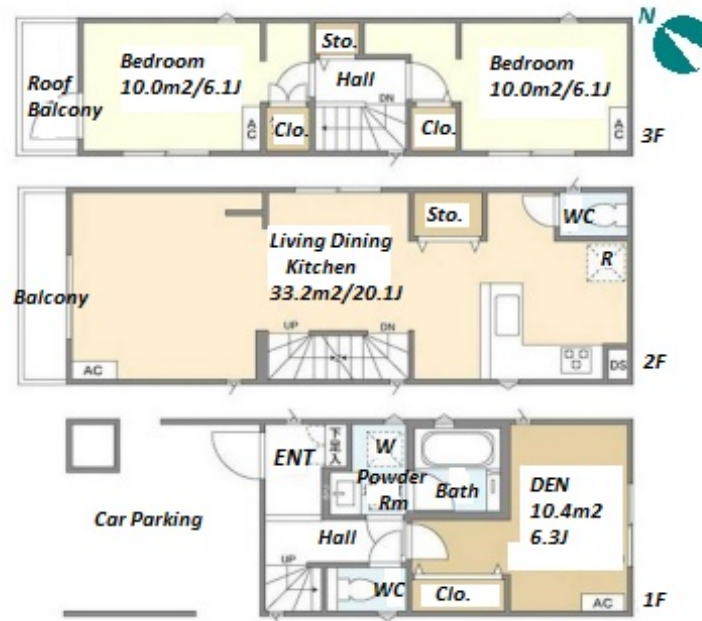
FOR RENT

Property ID No. :150067

HOUSEREP TOKYO INC.

Website : www.housserep-tokyo.com

Property Name	KOLET KANAMACHI	Unit No.	TYPE	Access	Kanamachi Station on JR Joban Line (10 min)
		#07	House		
Address	4-23-3, Higashikanamachi, Katsushika-Ku, Tokyo				



Lease Conditions

LAYOUT	2 BR+Den		
SIZE	88.23 m ² /949.69 ft ²		
RENT	JPY 253,000 / month		
Management Fee	-		
Deposit	2 months	Key Money	1 month
Lease Term	Standard lease for 24 months		
Available	Now		
Renewal Fee	1 month		
Agent Fee	1 month + tax		
Other Info	Guarantor Company : TBC / Air-Con / Separated Toilet / Balcony / Internet (Extra Charge) / Penalty Fee for Early Cancellation / Musical Instrument Negotiable / Flooring / Bathroom dryer / 2 Toilets		

Building Information

Completion	Jan, 2023	Earthquake Resistance	New
Structure	Wooden, 3 story		
Car Parking	(Included)		
Bicycle Parking	-		
Music Instrument	Negotiable	Pet	Negotiable
Facilities	House / Delivery box / Newly-built (~7 y/o)		

Remarks

Renters Insurance : Required

*The actual Layout & Size may differ slightly from this floor plans & pictures.



HOUSEREP TOKYO INC.

ハウスレップトーキョー株式会社

#301, 1-4-15, Hiroo, Shibuya-ku, Tokyo 150-0012, Japan

+81 (0)3 6427 5860

inquiry@housserep-tokyo.com

Transaction Type : Intermediate

Agent Fee : 1 month + tax

Website : www.housserep-tokyo.com

