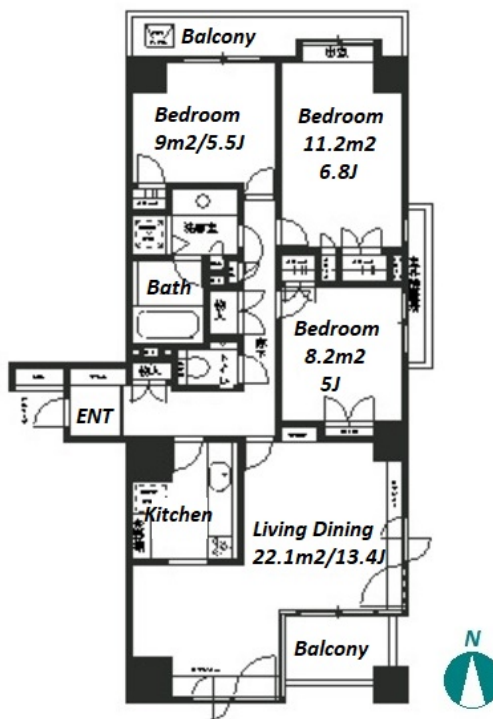


Property Name	PARK SIDE WINGS	Unit No.	TYPE	Access	Tsukishima Station on Yurakucho Line (6 min) Hacchoubori Station on Hibiya Line (11 min)
		701	Apt.		
Address	1-11-3, Tsukuda, Chuo-Ku, Tokyo				

"Renovated" Vintage Apartment in Tsukishima area



Lease Conditions			
LAYOUT	3 BR		
SIZE	80.32 m ² /864.55 ft ²		
RENT	JPY 318,000 / month		
Management Fee	-		
Deposit	1 month	Key Money	1 month
Lease Term	Standard lease for 24 months		
Available	Now		
Renewal Fee	1 month		
Agent Fee	1 month + tax		
Other Info	Key Replacement Fee : JPY15,000 Tax not included / Guarantor Company : TBC / Auto lock / Renovated / Air-Con / Separated Toilet / Balcony / Internet Included / Internet (Extra Charge) / Musical Instrument Negotiable / Nice Views / Flooring / IH Stoves / Oven / Bathroom dryer / Corner Unit		

Building Information			
Completion	May, 1988	Earthquake Resistance	New
Structure	SRC, 14 story		
Car Parking	TBC		
Bicycle Parking	for 2 spaces (Included)		
Musical Instrument	Negotiable	Pet	-
Facilities	Motorcycle Parking (TBC) / Front desk / Janitor / Delivery box / Elevator		

*The actual Layout & Size may differ slightly from this floor plans & pictures.



HOUSE REP TOKYO INC.

ハウスレップトーキョー株式会社

#301, 1-4-15, Hiroo, Shibuya-ku, Tokyo 150-0012, Japan

+81 (0)3 6427 5860

inquiry@housserep-tokyo.com

Transaction Type : Intermediate

Agent Fee : 1 month + tax

Website : www.housserep-tokyo.com



Remarks
Renters Insurance : Required