

FOR RENT

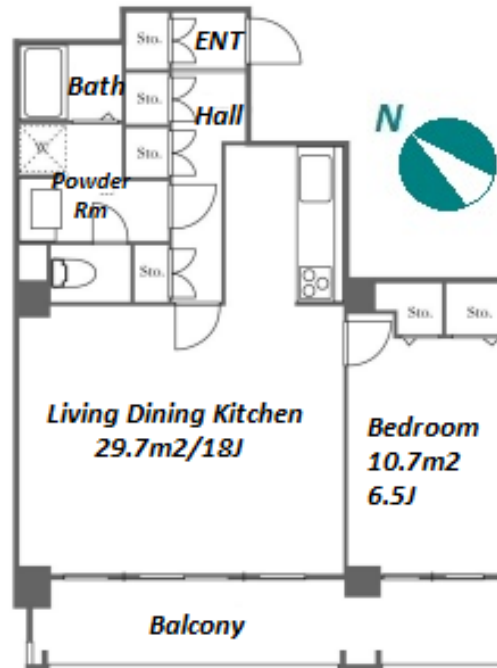
Property ID No. :146344

HOUSEREP TOKYO INC.

Website : www.housserep-tokyo.com

Property Name	RIVER CITY 21 EAST TOWERS 6	Unit No.	TYPE	Access	Tsukishima Station on Yurakucho Line (5 min) Tsukishima Station on Oedo Line (5 min) Hacchoubori Station on JR Keiyo Line (14 min)
		604	Apt.		
Address	2-2-6, Tsukuda, Chuo-Ku, Tokyo				

High-rise residence in Tsukishima, near Sumida River



Lease Conditions			
LAYOUT	1 BR		
SIZE	62.94 m²/677.48 ft²		
RENT	JPY 226,000 / month		
Management Fee	JPY10,000/month		
Deposit	2 months	Key Money	-
Lease Term	Standard lease for 24 months		
Available	Now		
Renewal Fee	1 month		
Agent Fee	1 month + tax		
Other Info	Key Replacement Fee : JPY15,000 Tax not included / Guarantor Company : TBC / No Key Money / Auto lock / Air-Con / Separated Toilet / Balcony / Internet (Extra Charge) / Penalty Fee for Early Cancellation / Nice Views / Flooring / Bathroom dryer / 2 Car Parks		

Building Information			
Completion	Apr, 1988	Earthquake Resistance	New
Structure	SRC, 13 story		
Car Parking	JPY30,000 + tax / month		
Bicycle Parking	TBC		
Music Instrument	-	Pet	N/A
Facilities	Motorcycle Parking (TBC) / Near Large Parks / Janitor / Delivery box / Elevator / Security / Close to Station		

Remarks
Renters Insurance : Required / Parking : 3 months deposit

*The actual Layout & Size may differ slightly from this floor plans & pictures.



HOUSEREP TOKYO INC.

ハウスレップトーキョー株式会社

#301, 1-4-15, Hiroo, Shibuya-ku, Tokyo 150-0012, Japan

+81 (0)3 6427 5860 inquiry@housserep-tokyo.com

Transaction Type : Intermediate

Agent Fee : 1 month + tax

Website : www.housserep-tokyo.com

