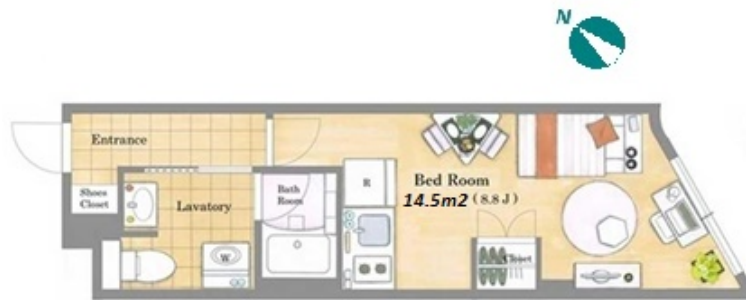
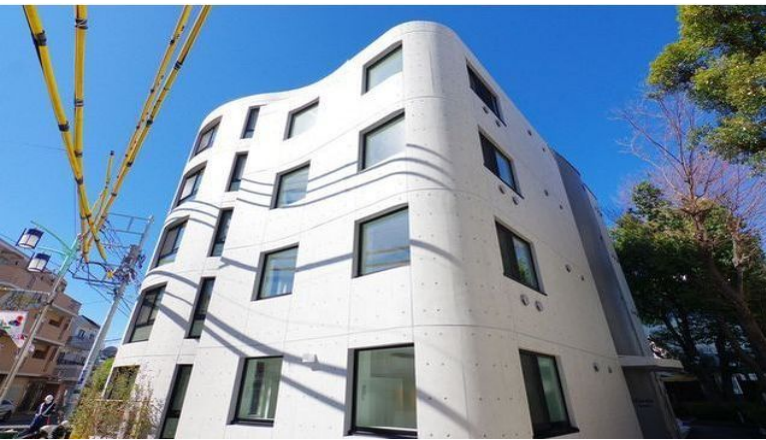


| | | | | | | | |
|---------------|---------------------------------|----------|-----|------|------|--------|---|
| Property Name | LIVIO MAISON TORITSUDAIGAKU | Unit No. | 203 | TYPE | Apt. | Access | Toritsudaigaku Station on Toyoko Line (7 min) |
| Address | 2-5-9, Yakumo, Meguro-Ku, Tokyo | | | | | | |

New Apt. in Toritsudaigaku, in Peaceful Neighborhood



| Lease Conditions | | | |
|------------------|--|-----------|---|
| LAYOUT | Studio | | |
| SIZE | 25.03 m²/269.42 ft² | | |
| RENT | JPY 107,000 / month | | |
| Management Fee | JPY14,000/month | | |
| Deposit | 1 month | Key Money | - |
| Lease Term | Standard lease for 24 months | | |
| Available | End, Apr, 2024 | | |
| Renewal Fee | 1 month | | |
| Agent Fee | 1 month + tax | | |
| Other Info | Key Replacement Fee : JPY30,000 Tax not included / Guarantor Company : TBC / No Key Money / Free rent / Auto lock / Air-Con / Separated Toilet / Penalty Fee for Early Cancellation / Bathroom dryer | | |

| Building Information | | | |
|----------------------|--|-----------------------|-----|
| Completion | Feb, 2022 | Earthquake Resistance | New |
| Structure | RC, 5 story | | |
| Car Parking | N/A | | |
| Bicycle Parking | (Included) | | |
| Music Instrument | - | Pet | N/A |
| Facilities | Motorcycle Parking (JPY3,000 + tax / month) / Near Large Parks / Delivery box / Elevator / Security / Newly-built (~7 y/o) | | |

| Remarks |
|------------------------------|
| Renters Insurance : Required |

*The actual Layout & Size may differ slightly from this floor plans & pictures.



HOUSEREP TOKYO INC.

ハウスレップトーキョー株式会社

#301, 1-4-15, Hiroo, Shibuya-ku, Tokyo 150-0012, Japan

+81 (0)3 6427 5860

inquiry@housserep-tokyo.com

Transaction Type : Intermediate

Agent Fee : 1 month + tax

Website : www.housserep-tokyo.com

