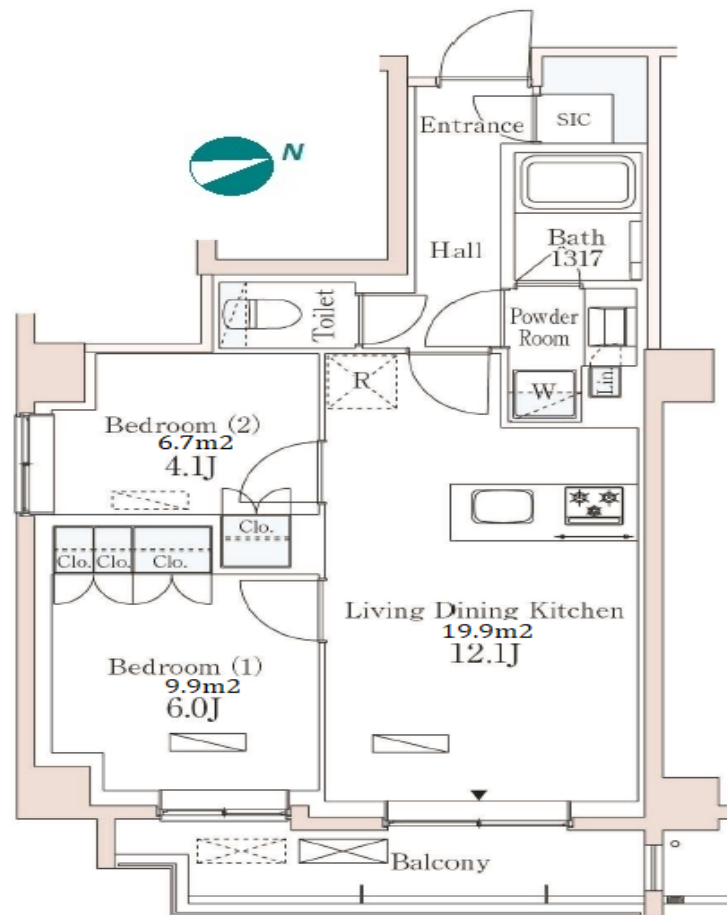


Property Name	PARK AXIS ICHIGAYA SANAICHO	Unit No.	TYPE	Access	Ichigaya Station on Toei Shinjuku Line (6 min) Ichigaya Station on JR Chuo-Sobu Line (7 min)
		401	Apt.		
Address	29-2, Ichigayasanaicho, Shinjuku-Ku, Tokyo				

Low-rise Apt. in Ichiagaya



Lease Conditions			
LAYOUT	2 BR		
SIZE	51.77 m ² /557.24 ft ²		
RENT	JPY 275,000 / month		
Management Fee	JPY15,000/month		
Deposit	2 months	Key Money	1 month
Lease Term	Standard lease for 24 months		
Available	Early, Jun, 2024		
Renewal Fee	1 month		
Agent Fee	1 month + tax		
Other Info	Key Replacement Fee : JPY20,000 Tax not included / Guarantor Company : TBC / Auto lock / Air-Con / Separated Toilet / Balcony / CS/CATV / Flooring / Bathroom dryer		

Building Information			
Completion	Jan, 2021	Earthquake Resistance	New
Structure	RC, 5 story		
Car Parking	N/A		
Bicycle Parking	for 1 space (Included)		
Music Instrument	-	Pet	Allowed
Facilities	Motorcycle Parking (TBC) / Delivery box / Security / Newly-built (~7 y/o)		

*The actual Layout & Size may differ slightly from this floor plans & pictures.



HOUSEREP TOKYO INC.

ハウスレップトーキョー株式会社

#301, 1-4-15, Hiroo, Shibuya-ku, Tokyo 150-0012, Japan

+81 (0)3 6427 5860 inquiry@housserrep-tokyo.com

Transaction Type : Intermediate

Agent Fee : 1 month + tax

Website : www.housserrep-tokyo.com



Remarks	
Renters Insurance : Required / Bicycle parking : Registration sticker fee: JPY.2,000+tax / Pet:additional deposit (1 month) / Pet : a small dog or a cat	