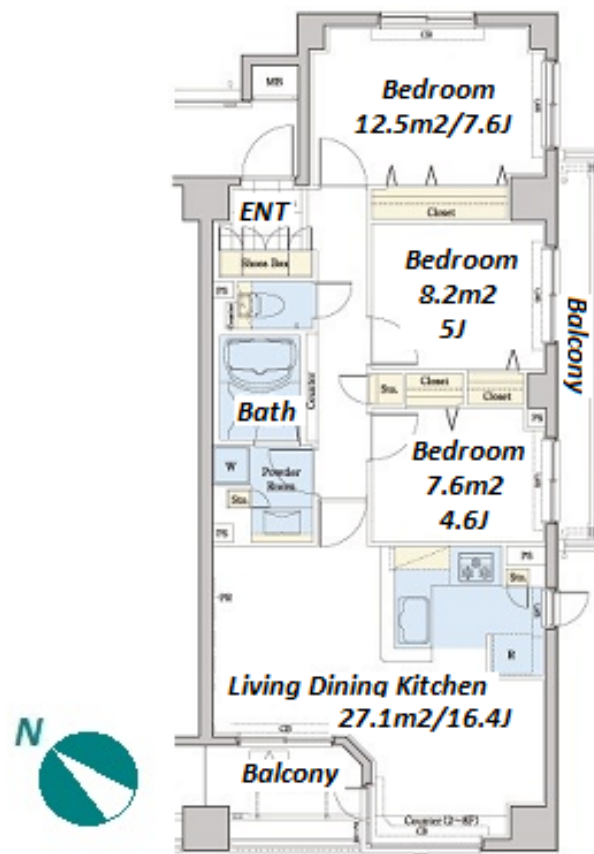
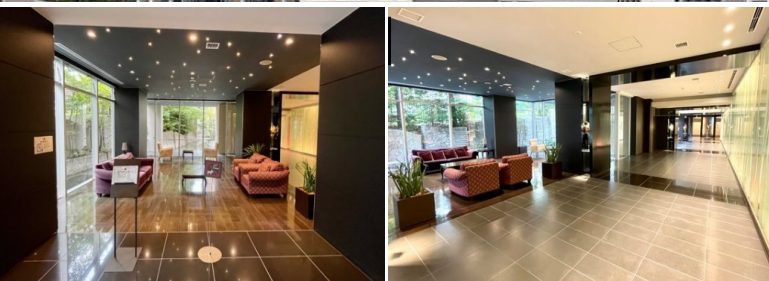
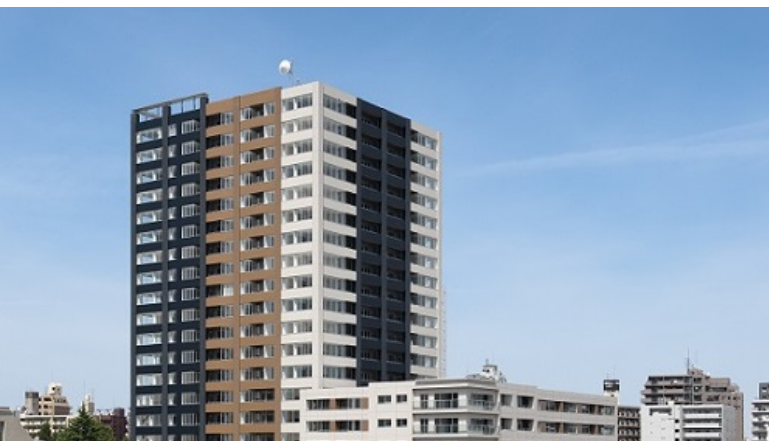


Property Name	RESIDIA TOWER KAMI-IKEBUKURO(PARK)	Unit No.	TYPE	Access	Ootsuka Station on JR Yamanote Line (10 min) Nishisugamo Station on Mita Line (14 min)
		PR-401	Apt.		
Address	1-37-5, Kamiikebukuro, Toshima-Ku, Tokyo				

Stylish Tower Residence near Ikebukuro



Lease Conditions		
LAYOUT	3 BR	
SIZE	76.08 m²/818.91 ft²	
RENT	JPY 335,000 / month	
Management Fee	JPY15,000/month	
Deposit	1 month	Key Money -
Lease Term	Fixed term lease for 36 months	
Available	End, Apr, 2024	
Renewal Fee	-	
Agent Fee	1 month + tax	
Other Info	Key Replacement Fee : JPY20,000 Tax not included / Guarantor Company : TBC / Auto lock / Air-Con / Separated Toilet / Balcony / Internet (Extra Charge) / Penalty Fee for Early Cancellation / Musical Instrument Negotiable / CS/CATV / Flooring / Bathroom dryer	

Building Information			
Completion	Feb, 2009	Earthquake Resistance	New
Structure	RC, 8 story		
Car Parking	JPY25,000 ~ 39,000 + tax / month		
Bicycle Parking	N/A		
Music Instrument	Negotiable	Pet	Allowed
Facilities	Front desk / Delivery box / Elevator		

*The actual Layout & Size may differ slightly from this floor plans & pictures.



HOUSEREP TOKYO INC.

ハウスレップトーキョー株式会社

#301, 1-4-15, Hiroo, Shibuya-ku, Tokyo 150-0012, Japan

+81 (0)3 6427 5860

inquiry@housserrep-tokyo.com

Transaction Type : Intermediate

Agent Fee : 1 month + tax

Website : www.housserrep-tokyo.com



Remarks
Fixed term lease : Re-Contract fee : 1 month of new rent / Internet fee: JPY.1,500+tax/month / Parking : 1 month for deposit / Pet:additional deposit (1 month) / Pet : a small dog or a cat