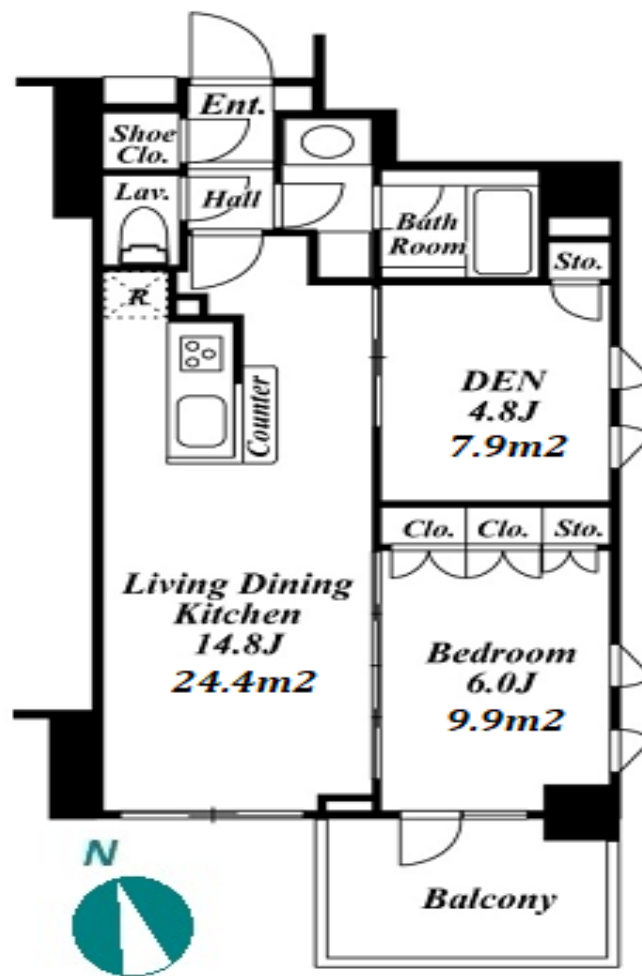


Property Name	FORE CITY TOMIGAYA	Unit No.	TYPE	Access	Yoyogikouenn Station on Chiyoda Line (10 min) Yoyogihachimann Station on Odakyu Line (11 min) Komabatoudaimae Station on Keio Inokashira Line (18 min)
		201	Apt.		
Address	2-16-14, Tomigaya, Shibuya-Ku, Tokyo				

Mid-rise Apt. in Yoyogi-koen, near Yoyogi Park



*The actual Layout & Size may differ slightly from this floor plans & pictures.

Lease Conditions			
LAYOUT	1 BR+Den		
SIZE	54.62 m ² /587.92 ft ²		
RENT	JPY 265,000 / month		
Management Fee	JPY10,000/month		
Deposit	1 month	Key Money	-
Lease Term	Standard lease for 24 months		
Available	Negotiable		
Renewal Fee	1 month		
Agent Fee	1 month + tax		
Other Info	Key Replacement Fee : JPY15,000 Tax not included / No Key Money / Auto lock / Air-Con / Separated Toilet / Balcony / Internet Included / Penalty Fee for Early Cancellation / Flooring / Bathroom dryer / Corner Unit		

Building Information			
Completion	Mar, 2006	Earthquake Resistance	New
Structure	RC, 7 story		
Car Parking	JPY45,000 + tax / month		
Bicycle Parking	TBC		
Music Instrument	-	Pet	Allowed
Facilities	Motorcycle Parking (TBC) / Trunk Room (JPY25,000 + tax / month) / Near Large Parks / Delivery box / Elevator / Security		

Remarks
Renters Insurance : Required / Parking : 1 month for deposit / Pet:additional deposit (1 month)



HOUSEREP TOKYO INC.

ハウスレップトーキョー株式会社

#301, 1-4-15, Hiroo, Shibuya-ku, Tokyo 150-0012, Japan

+81 (0)3 6427 5860

inquiry@housserep-tokyo.com

Transaction Type : Intermediate

Agent Fee : 1 month + tax

Website : www.housserep-tokyo.com

