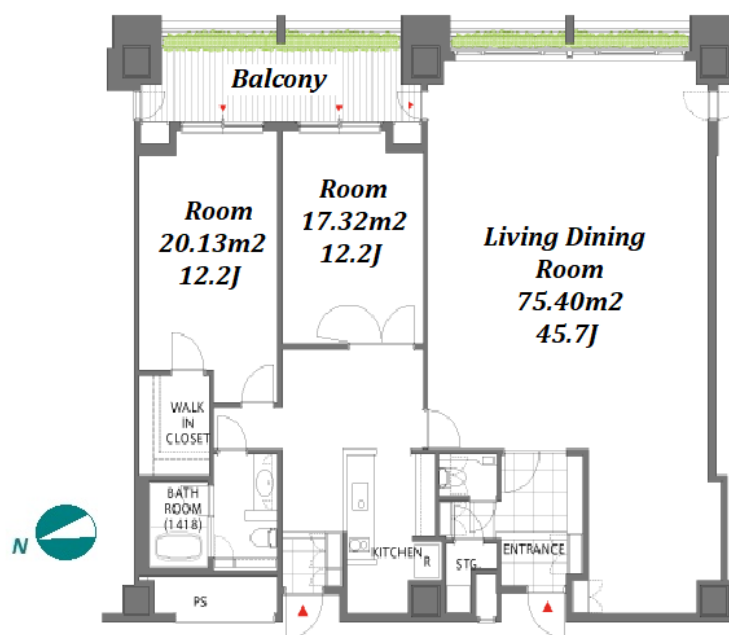


Property Name	HOLLAND HILLS MORI TOWER-Rop	Unit No.	TYPE	Access	Kamiyachou Station on Hibiya Line (1 min) Ropponngiicchoume Station on Namboku Line (10 min) Onarimonn Station on Mita Line (10 min)
		1207	Apt.		
Address	5-11-1, Toranomom, Minato-Ku, Tokyo				

Stylish Apt. in Kamiyacho, near "Tokyo Tower" & "Tokyo American Club"



Lease Conditions	
LAYOUT	2 BR
SIZE	159.19 m ² /1713.5 ft ²
RENT	JPY 1,750,000 / month
Management Fee	-
Deposit	4 months
Key Money	-
Lease Term	Fixed term lease for 36 months
Available	End, May, 2024
Renewal Fee	-
Agent Fee	1 month + tax
Other Info	Guarantor Company : TBC / No Key Money / Auto lock / Air-Con / Separated Toilet / Balcony / Penalty Fee for Early Cancellation / BBQ place / Roof Balcony / Flooring / IH Stoves / Washer / Dryer / Dishwasher / Oven

Building Information	
Completion	Oct, 2004
Earthquake Resistance	New
Structure	SRC, 24 story
Car Parking	TBC
Bicycle Parking	extra charge
Music Instrument	-
Pet	Negotiable
Facilities	Motorcycle Parking (TBC) / Trunk Room (extra charge) / Within 20 min walk to Roppongi / Within 20 min to Roppongi by train / Within 20 min to Tokyo station by car / Near Large Parks / Front desk / Elevator / Sky lounge / Close to Station / High-rise

Remarks
Renters Insurance : Required



HOUSEREP TOKYO INC.

ハウスレップトーキョー株式会社

#301, 1-4-15, Hiroo, Shibuya-ku, Tokyo 150-0012, Japan

+81 (0)3 6427 5860

inquiry@housserep-tokyo.com

*The actual Layout & Size may differ slightly from this floor plans & pictures.

Transaction Type : Intermediate

Agent Fee : 1 month + tax

Website : www.housserep-tokyo.com

