

FOR RENT

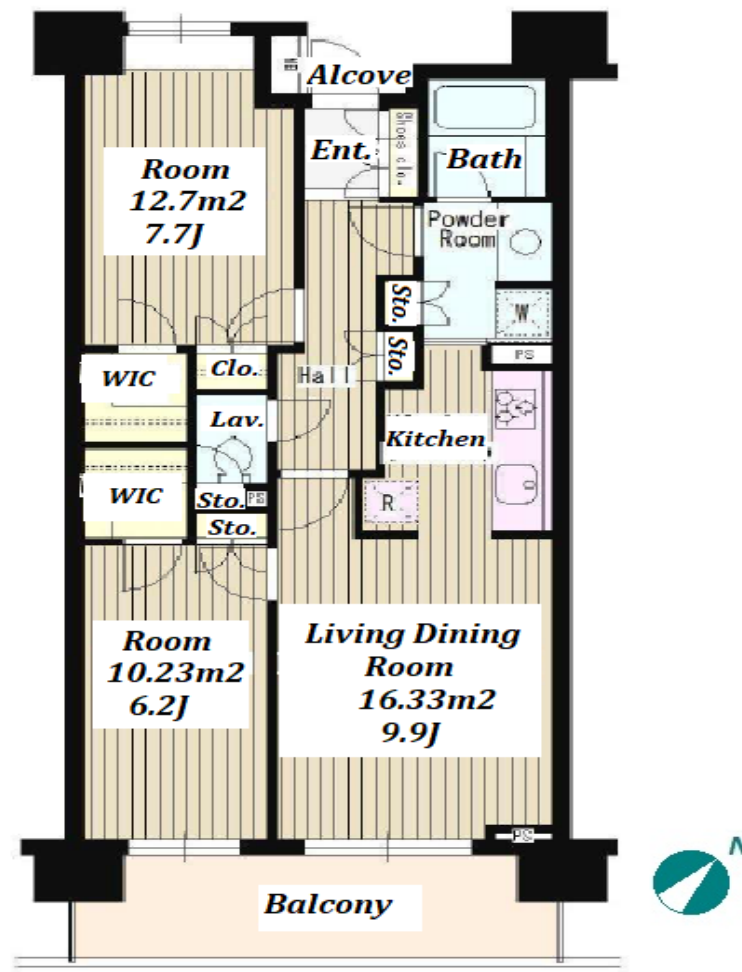
Property ID No. :135999

HOUSEREP TOKYO INC.

Website : www.housserep-tokyo.com

Property Name	CLASSA MEGURO	Unit No.	TYPE	Access	Meguro Station on JR Yamanote Line (4 min)
		803	Apt.		
Address	1-5-4, Shimomeguro, Meguro-Ku, Tokyo				

Cozy Apartment in Meguro, near Meguro River



*The actual Layout & Size may differ slightly from this floor plans & pictures.

Lease Conditions			
LAYOUT	2 BR		
SIZE	65.59 m²/706 ft²		
RENT	JPY 288,000 / month		
Management Fee	JPY10,000/month		
Deposit	2 months	Key Money	1 month
Lease Term	Standard lease for 24 months		
Available	End, Apr, 2024		
Renewal Fee	1 month		
Agent Fee	1 month + tax		
Other Info	Key Replacement Fee : JPY20,000 Tax not included / Guarantor Company : TBC / Auto lock / Air-Con / Separated Toilet / Balcony / Musical Instrument Negotiable / Floor Heating / Bathroom dryer		

Building Information			
Completion	Aug, 2004	Earthquake Resistance	New
Structure	SRC, 10 story		
Car Parking	JPY40,000/ month		
Bicycle Parking	TBC		
Music Instrument	Negotiable	Pet	-
Facilities	Front desk / Delivery box / Elevator		

Remarks
Renters Insurance : Required



HOUSEREP TOKYO INC.

ハウスレップトーキョー株式会社

#301, 1-4-15, Hiroo, Shibuya-ku, Tokyo 150-0012, Japan

+81 (0)3 6427 5860

inquiry@housserep-tokyo.com

Transaction Type : Intermediate

Agent Fee : 1 month + tax

Website : www.housserep-tokyo.com

