

FOR RENT

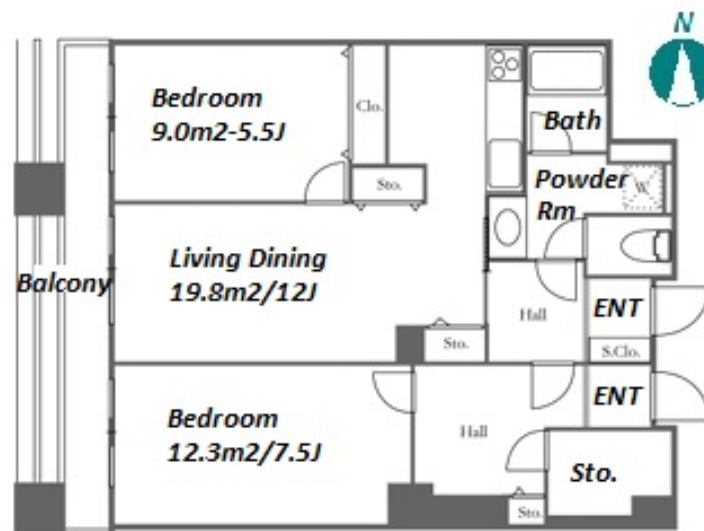
Property ID No. :135972

HOUSEREP TOKYO INC.

Website : www.housserep-tokyo.com

Property Name	RIVER CITY 21 EAST TOWERS 10	Unit No.	TYPE	Access	Tsukishima Station on Oedo Line (5 min) Tsukishima Station on Yurakucho Line (7 min) Hacchoubori Station on Hibiya Line (13 min)
		3012	Apt.		
Address	2-2-10, Tsukuda, Chuo-Ku, Tokyo				

## Renovated Waterfront Apt. in Tsukishima, Tokyo Bay Area



Lease Conditions		
LAYOUT	2 BR	
SIZE	73.65 m²/792.76 ft²	
RENT	JPY 278,000 / month	
Management Fee	JPY10,000/month	
Deposit	2 months	Key Money -
Lease Term	Standard lease for 24 months	
Available	Now	
Renewal Fee	1 month	
Agent Fee	1 month + tax	
Other Info	Key Replacement Fee : JPY15,000 Tax not included / Guarantor Company : TBC / No Key Money / Auto lock / Air-Con / Separated Toilet / Balcony / Internet (Extra Charge) / Penalty Fee for Early Cancellation / Nice Views / Flooring / IH Stoves / Bathroom dryer / 2 Car Parks	

Building Information			
Completion	Mar, 1991	Earthquake Resistance	New
Structure	SRC, 37 story		
Car Parking	JPY30,000 + tax / month		
Bicycle Parking	TBC		
Music Instrument	-	Pet	N/A
Facilities	Motorcycle Parking (TBC) / Trunk Room ((Included)) / Within 20 min to Tokyo station by car / Near Large Parks / Janitor / Delivery box / Elevator / High-rise		

\*The actual Layout &amp; Size may differ slightly from this floor plans &amp; pictures.



HOUSEREP TOKYO INC.

ハウスレップトーキョー株式会社

#301, 1-4-15, Hiroo, Shibuya-ku, Tokyo 150-0012, Japan

+81 (0)3 6427 5860

inquiry@housserep-tokyo.com

Transaction Type : Intermediate

Agent Fee : 1 month + tax

Website : www.housserep-tokyo.com



Remarks
Renters Insurance : Required / Parking : 3 months deposit