

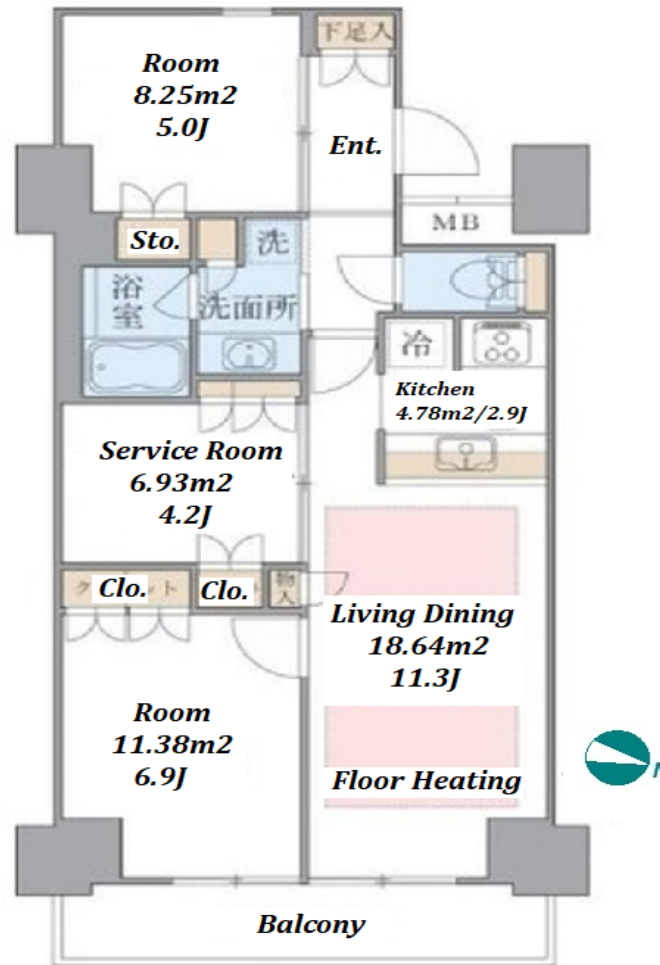
FOR RENT

Property ID No. :135648

HOUSEREP TOKYO INC.

Website : www.housserrep-tokyo.com

Property Name	BRILLIA IST SHINONOME CANAL COURT	Unit No.	TYPE	Access	Tatsumi Station on Yurakucho Line (11 min) Toyosu Station on Yurakucho Line (12 min)
		918	Apt.		
Address	1-9-22, Shinonome, Koto-Ku, Tokyo				



\*The actual Layout &amp; Size may differ slightly from this floor plans &amp; pictures.

Lease Conditions			
LAYOUT	1 BR+S+Den		
SIZE	66.09 m²/711.38 ft²		
RENT	JPY 224,000 / month		
Management Fee	JPY9,000/month		
Deposit	2 months	Key Money	1 month
Lease Term	Fixed term lease for 24 months		
Available	End, May, 2024		
Renewal Fee	-		
Agent Fee	1 month + tax		
Other Info	Key Replacement Fee : JPY25,000 Tax not included / Guarantor Company : TBC / Auto lock / Air-Con / Separated Toilet / Balcony / Internet Included / Flooring / Floor Heating		

Building Information			
Completion	Mar, 2005	Earthquake Resistance	New
Structure	RC, 14 story		
Car Parking	TBC		
Bicycle Parking	TBC		
Music Instrument	-	Pet	N/A
Facilities	Motorcycle Parking (TBC) / Near Large Parks / Front desk / Delivery box / Elevator		

Remarks



HOUSEREP TOKYO INC.

ハウズレップトーキョー株式会社

#301, 1-4-15, Hiroo, Shibuya-ku, Tokyo 150-0012, Japan

+81 (0)3 6427 5860

inquiry@housserrep-tokyo.com

Transaction Type : Intermediate

Agent Fee : 1 month + tax

Website : www.housserrep-tokyo.com

