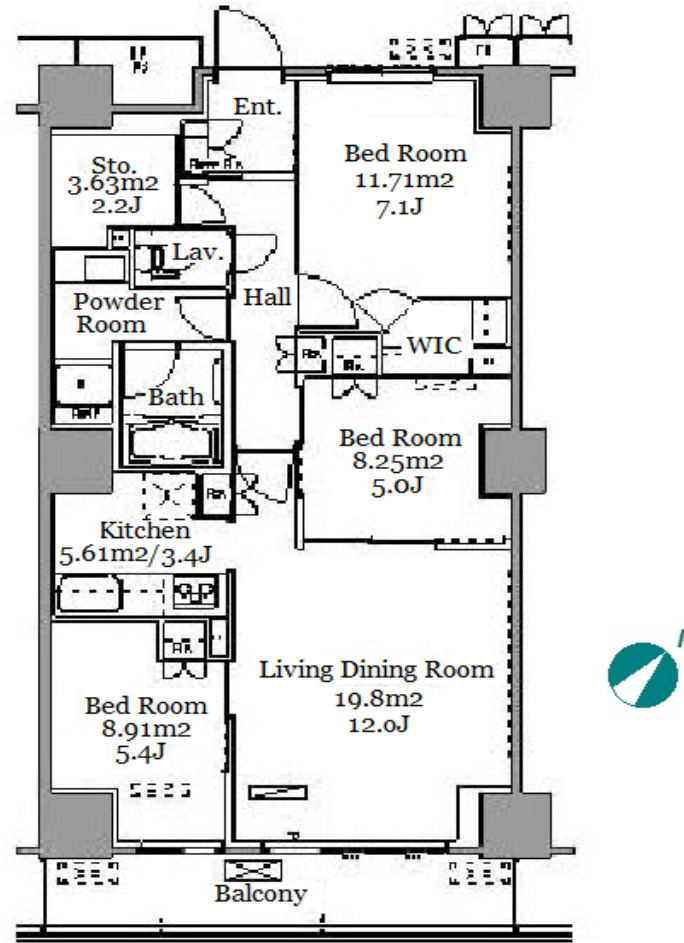


Property Name	PARK AXIS TOYOSU	Unit No.	TYPE	Access	Toyosu Station on Yurakucho Line (8 min) Tsukishima Station on Yurakucho Line (14 min)
		406	Apt.		
Address	1-2-39, Toyosu, Koto-Ku, Tokyo				

Mid-rise Apt. in Toyosu, Tokyo Bay area



*The actual Layout & Size may differ slightly from this floor plans & pictures.

Lease Conditions			
LAYOUT	3 BR		
SIZE	78.45 m ² /844.42 ft ²		
RENT	JPY 310,000 / month		
Management Fee	JPY12,000/month		
Deposit	2 months	Key Money	-
Lease Term	Standard lease for 24 months		
Available	Now		
Renewal Fee	1 month		
Agent Fee	1 month + tax		
Other Info	Key Replacement Fee : JPY15,000 Tax not included / Guarantor Company : TBC / No Key Money / Auto lock / Air-Con / Separated Toilet / Balcony / Penalty Fee for Early Cancellation / Musical Instrument Negotiable / CS/CATV / Flooring / IH Stoves / Bathroom dryer / WIC		

Building Information			
Completion	Mar, 2008	Earthquake Resistance	New
Structure	RC, 20 story		
Car Parking	TBC		
Bicycle Parking	JPY200 ~ 300 + tax / month		
Music Instrument	Negotiable	Pet	Allowed
Facilities	Motorcycle Parking (TBC) / Gym ((Included)) / Concierge / Delivery box / Elevator		

Remarks
Renters Insurance : Required / Pet:additional deposit (1 month) / Pet : Management fee?JPY.1,000/month for a pet



HOUSEREP TOKYO INC.

ハウスレップトーキョー 株式会社

#301, 1-4-15, Hiroo, Shibuya-ku, Tokyo 150-0012, Japan

+81 (0)3 6427 5860 inquiry@housserep-tokyo.com

Transaction Type : Intermediate

Agent Fee : 1 month + tax

Website : www.housserep-tokyo.com

