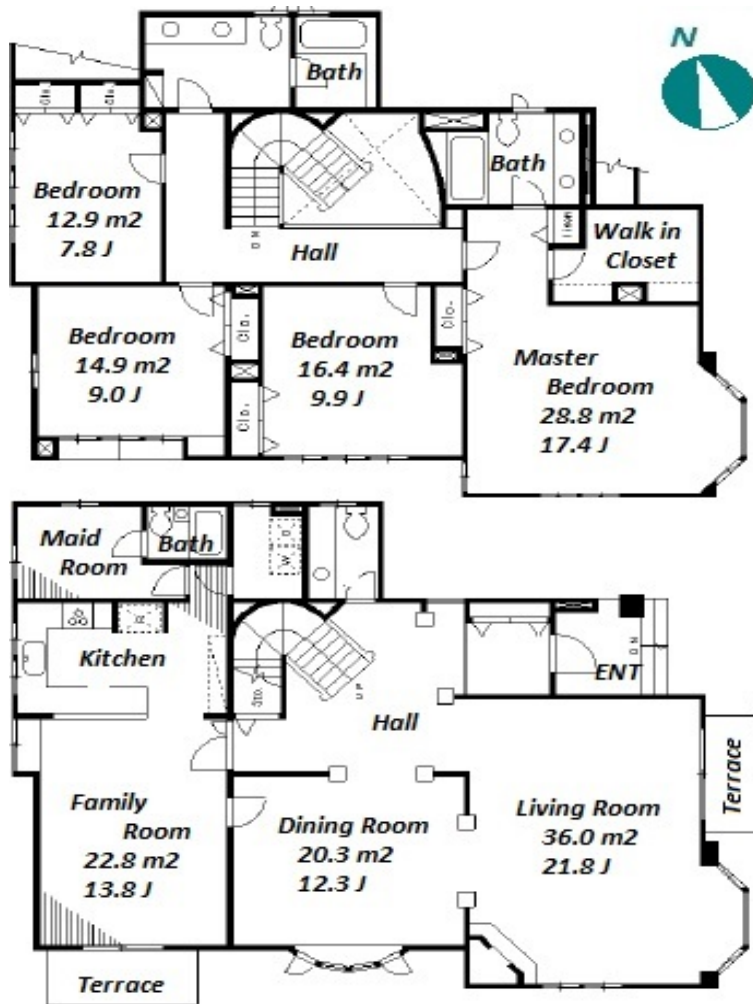


Property Name	HONMURACHO HOUSE	Unit No.	---	TYPE	House	Access	Hiroo Station on Hibiya Line (10 min) Azabujuban Station on Namboku Line (12 min) Azabujuban Station on Oedo Line (15 min)
Address	2-7-17, Motoazabu, Minato-Ku, Tokyo						

Spacious 4BR House in Hiroo, near "Arisugawa Park" & "Azabujuban"



*The actual Layout & Size may differ slightly from this floor plans & pictures.

Lease Conditions			
LAYOUT	4 BR+F+M		
SIZE	258.95 m ² /2787.31 ft ²		
RENT	JPY 1,500,000 / month		
Management Fee	-		
Deposit	2 months	Key Money	-
Lease Term	Standard lease for 24 months		
Available	Mid, Mar, 2024		
Renewal Fee	1 month		
Agent Fee	1 month + tax		
Other Info	Key Replacement Fee : JPY30,000 Tax not included / No Key Money / Fridge / Air-Con / Separated Toilet / Loft/Maisonnette / Internet (Extra Charge) / 2+ bathrooms / Garden/Terrace / Curtain / Washer / Dryer / Dishwasher / Oven / WIC / 2 Toilets		

Building Information			
Completion	Mar, 2000	Earthquake Resistance	New
Structure	Wooden, 2 story		
Car Parking	for 2 spaces (Included)		
Bicycle Parking	N/A		
Music Instrument	-	Pet	Negotiable
Facilities	Motorcycle Parking (TBC)		

Remarks



HOUSEREP TOKYO INC.

ハウズレップトーキョー 株式会社

#301, 1-4-15, Hiroo, Shibuya-ku, Tokyo 150-0012, Japan

+81 (0)3 6427 5860

inquiry@housserrep-tokyo.com

Transaction Type : Intermediate

Agent Fee : 1 month + tax

Website : www.housserrep-tokyo.com

