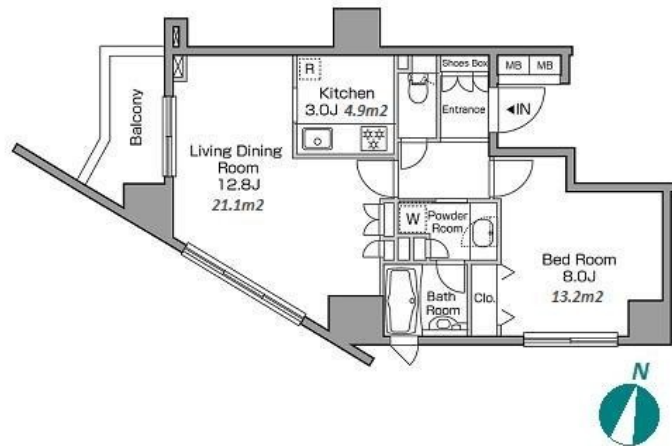


Property Name	RESIDIA TOWER NAKAMEGURO	Unit No.	TYPE	Access	Nakameguro Station on Hibiya Line (3 min)
		1401	Apt.		
Address	2-15-1, Kamimeguro, Meguro-Ku, Tokyo				

High-rise Apt. in Nakameguro, near Nakameguro Shopping Street



Lease Conditions			
LAYOUT	1 BR		
SIZE	53.21 m²/572.74 ft²		
RENT	JPY 325,000 / month		
Management Fee	JPY15,000/month		
Deposit	2 months	Key Money	-
Lease Term	Standard lease for 24 months		
Available	Mid, Jun, 2024		
Renewal Fee	1 month		
Agent Fee	1 month + tax		
Other Info	Key Replacement Fee : JPY27,000 Tax not included / Guarantor Company : TBC / No Key Money / Auto lock / Air-Con / Separated Toilet / Balcony / Internet (Extra Charge) / Penalty Fee for Early Cancellation / Flooring / Bathroom dryer		

Building Information			
Completion	Apr, 2007	Earthquake Resistance	New
Structure	RC, 19 story		
Car Parking	JPY40,000 + tax / month		
Bicycle Parking	TBC		
Music Instrument	-	Pet	Allowed
Facilities	Motorcycle Parking (TBC) / Within 20 min to Roppongi by train / Near Large Parks / Delivery box / Elevator		

Remarks
Renters Insurance : Required / Tenant support fee: JPY.10,000+tax/2years Internet fee: JPY.1,500+tax/month / Parking : 1 month for deposit / Bicycle parking : Registration fee: JPY.3,000+tax / Pet:additional deposit (1 month) / Pet : a small dog or a cat

*The actual Layout & Size may differ slightly from this floor plans & pictures.



HOUSEREP TOKYO INC.
ハウスレップトーキョー株式会社

#301, 1-4-15, Hiroo, Shibuya-ku, Tokyo 150-0012, Japan
+81 (0)3 6427 5860 inquiry@houserep-tokyo.com

Transaction Type : Intermediate
Agent Fee : 1 month + tax

Website : www.houserep-tokyo.com

