

FOR RENT

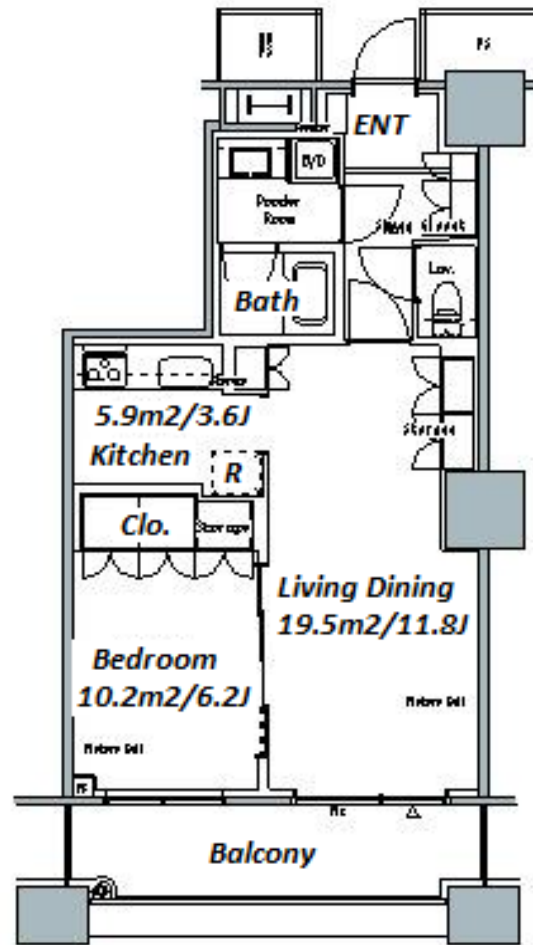
Property ID No. :126024

HOUSEREP TOKYO INC.

Website : www.houserep-tokyo.com

Property Name	THE TOKYO TOWERS MIDTOWER	Unit No.	TYPE	Access	Kachidoki Station on Oedo Line (6 min)
		1414	Apt.		
Address	6-3-2, Kachidoki, Chuo-Ku, Tokyo				

Luxurious Tower Residence in Kachidoki, Tokyo Bay Area



*The actual Layout & Size may differ slightly from this floor plans & pictures.

Lease Conditions			
LAYOUT	1 BR		
SIZE	53.81 m²/579.2 ft²		
RENT	JPY 221,000 / month		
Management Fee	JPY15,000/month		
Deposit	2 months	Key Money	-
Lease Term	Standard lease for 24 months		
Available	End, Apr, 2024		
Renewal Fee	1 month		
Agent Fee	1 month + tax		
Other Info	No Key Money / Auto lock / Air-Con / Separated Toilet / Balcony / Penalty Fee for Early Cancellation / Flooring / Bathroom dryer		

Building Information			
Completion	Jan, 2008	Earthquake Resistance	New
Structure	RC, 58 story		
Car Parking	TBC		
Bicycle Parking	TBC		
Music Instrument	-	Pet	Negotiable
Facilities	Motorcycle Parking (TBC) / Gym (extra charge) / Within 20 min to Tokyo station by car / Near Large Parks / pool / Front desk / Concierge / Janitor / Delivery box / Elevator / High-rise		

Remarks
Renters Insurance : Required / Guarantor Company-Required



HOUSEREP TOKYO INC.

ハウスレップトーキョー株式会社

#301, 1-4-15, Hiroo, Shibuya-ku, Tokyo 150-0012, Japan

+81 (0)3 6427 5860

inquiry@houserep-tokyo.com

Transaction Type : Intermediate

Agent Fee : 1 month + tax

Website : www.houserep-tokyo.com

