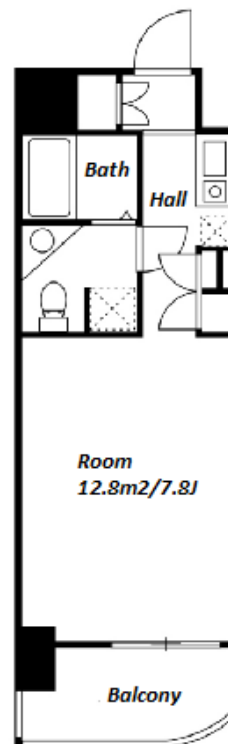
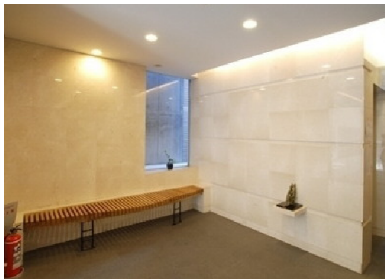


Property Name	CRESIDENCE TORANOMON	Unit No.	TYPE	Access	Toranomom Hills Station on <b>Hibiya</b> Line (6 min) Toranomonn Station on <b>Ginza</b> Line (6 min)
		1005	Apt.		
Address	3-15-8, Nishishimbashi, Minato-Ku, Tokyo				

Stylish Apt. in Shinbashi / Tranomon, near Tokyo Tower & Shiba Park



Lease Conditions		
LAYOUT	Studio	
SIZE	23.23 m <sup>2</sup> /250.04 ft <sup>2</sup>	
RENT	JPY 107,000 / month	
Management Fee	JPY10,000/month	
Deposit	2 months	Key Money -
Lease Term	Standard lease for 24 months	
Available	Now	
Renewal Fee	1 month	
Agent Fee	1 month + tax	
Other Info	Key Replacement Fee : JPY18,000 Tax not included / Guarantor Company : TBC / No Key Money / Auto lock / Air-Con / Separated Toilet / Balcony / Penalty Fee for Early Cancellation / Nice Views / Flooring / IH Stoves	

Building Information			
Completion	Nov, 2005	Earthquake Resistance	New
Structure	SRC, 15 story		
Car Parking	TBC		
Bicycle Parking	TBC		
Music Instrument	-	Pet	Allowed
Facilities	Delivery box / Security / High-rise		

Remarks
Pet:additional deposit ( 1 month )

\*The actual Layout & Size may differ slightly from this floor plans & pictures.



HOUSEREP TOKYO INC.

ハウスレップトーキョー株式会社

#301, 1-4-15, Hiroo, Shibuya-ku, Tokyo 150-0012, Japan

+81 (0)3 6427 5860

inquiry@houserep-tokyo.com

Transaction Type : Intermediate

Agent Fee : 1 month + tax

Website : www.houserep-tokyo.com

