

FOR RENT

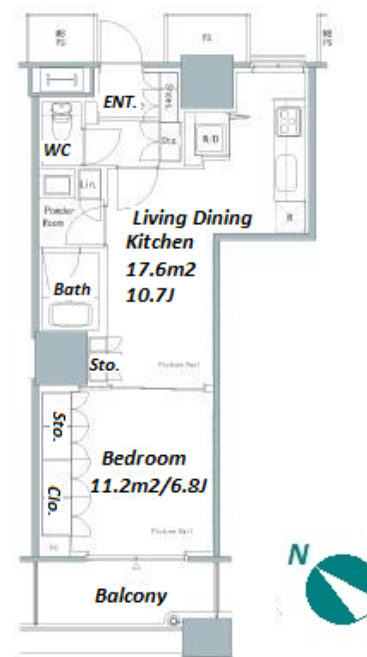
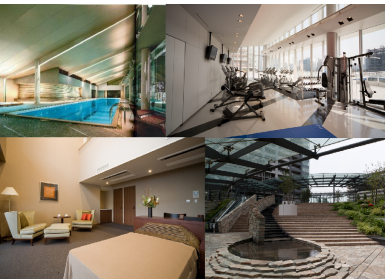
Property ID No. :123592

HOUSEREP TOKYO INC.

Website : www.houserep-tokyo.com

Property Name	THE TOKYO TOWERS MIDTOWER	Unit No.	TYPE	Access	Kachidoki Station on Oedo Line (6 min)
		1915	Apt.		
Address	6-3-2, Kachidoki, Chuo-Ku, Tokyo				

Luxurious Tower Residence in Kachidoki, Tokyo Bay Area



Lease Conditions			
LAYOUT	1 BR		
SIZE	46.38 m²/499.23 ft²		
RENT	JPY 211,000 / month		
Management Fee	JPY10,000/month		
Deposit	2 months	Key Money	1 month
Lease Term	Standard lease for 24 months		
Available	End, Mar, 2024		
Renewal Fee	1 month		
Agent Fee	1 month + tax		
Other Info	Guarantor Company : TBC / Auto lock / Air-Con / Separated Toilet / Balcony / Internet Included / Musical Instrument Negotiable / Flooring / Bathroom dryer		

Building Information			
Completion	Jan, 2008	Earthquake Resistance	New
Structure	RC, 58 story		
Car Parking	JPY30,800 ~ 37,700 + tax / month		
Bicycle Parking	for 2 spaces (Included)		
Music Instrument	Negotiable	Pet	Allowed
Facilities	Motorcycle Parking (extra charge) / Gym (extra charge) / Within 20 min to Tokyo station by car / Near Large Parks / pool / Front desk / Concierge / Janitor / Delivery box / Elevator / High-rise		

Remarks
Renters Insurance : Required / Parking : 2 months for deposit / Gym : Resident exclusive guest room, pool, sauna, golf range & gym (extra charge) / Pet:additional charge

*The actual Layout & Size may differ slightly from this floor plans & pictures.



HOUSEREP TOKYO INC.

ハウスレップトーキョー株式会社

#301, 1-4-15, Hiroo, Shibuya-ku, Tokyo 150-0012, Japan

+81 (0)3 6427 5860 inquiry@houserep-tokyo.com

Transaction Type : Intermediate

Agent Fee : 1 month + tax

Website : www.houserep-tokyo.com

