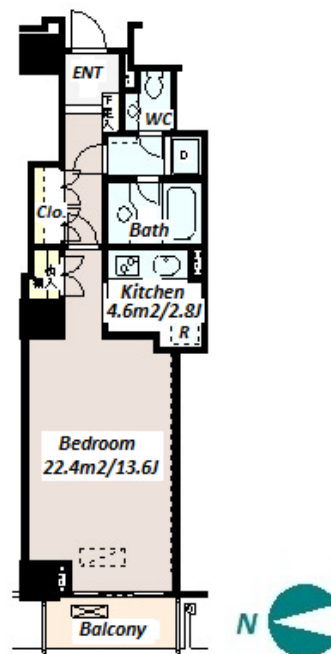


Property Name	YEBISU GARDEN TERRACE NIBANKAN	Unit No.	TYPE	Access	Ebisu Station on JR Yamanote Line (8 min) Ebisu Station on Hibiya Line (12 min) Meguro Station on JR Yamanote Line (15 min)
		418	Apt.		
Address	4-20-2, Ebisu, Shibuya-Ku, Tokyo				

Luxury Residence at "YEBISU GARDEN PLACE" in Ebisu / Meguro



Lease Conditions			
LAYOUT	Studio		
SIZE	42.96 m²/462.41 ft²		
RENT	JPY 236,000 / month		
Management Fee	-		
Deposit	2 months	Key Money	1 month
Lease Term	Standard lease for 24 months		
Available	Mid, Jul, 2024		
Renewal Fee	1 month		
Agent Fee	1 month + tax		
Other Info	Key Replacement Fee : JPY20,000 Tax not included / Auto lock / Air-Con / Separated Toilet / Balcony / Internet Included / Penalty Fee for Early Cancellation / Musical Instrument Negotiable / IH Stoves / Oven / Bathroom dryer / WIC		

Building Information			
Completion	Aug, 1994	Earthquake Resistance	New
Structure	RC, SRC, 13 story		
Car Parking	JPY43,000 ~ 60,000 + tax / month		
Bicycle Parking	JPY300 + tax / month		
Music Instrument	Negotiable	Pet	-
Facilities	Motorcycle Parking (TBC) / Within 20 min to Roppongi by train / Near Large Parks / Front desk / Concierge / Delivery box / Elevator / Security		

Remarks
Renters Insurance : Required / Parking : 3 months deposit

*The actual Layout & Size may differ slightly from this floor plans & pictures.



HOUSEREP TOKYO INC.

ハウスレップトーキョー株式会社

#301, 1-4-15, Hiroo, Shibuya-ku, Tokyo 150-0012, Japan

+81 (0)3 6427 5860 inquiry@housserep-tokyo.com

Transaction Type : Intermediate

Agent Fee : 1 month + tax

Website : www.housserep-tokyo.com

